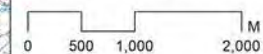


-  West Suffolk boundary
-  Valued Landscapes boundary
-  02 South Brecks
-  05 Kennett Valley
-  06 Horringer Farmlands&Parks

Scale 1:25,000 when printed at A1

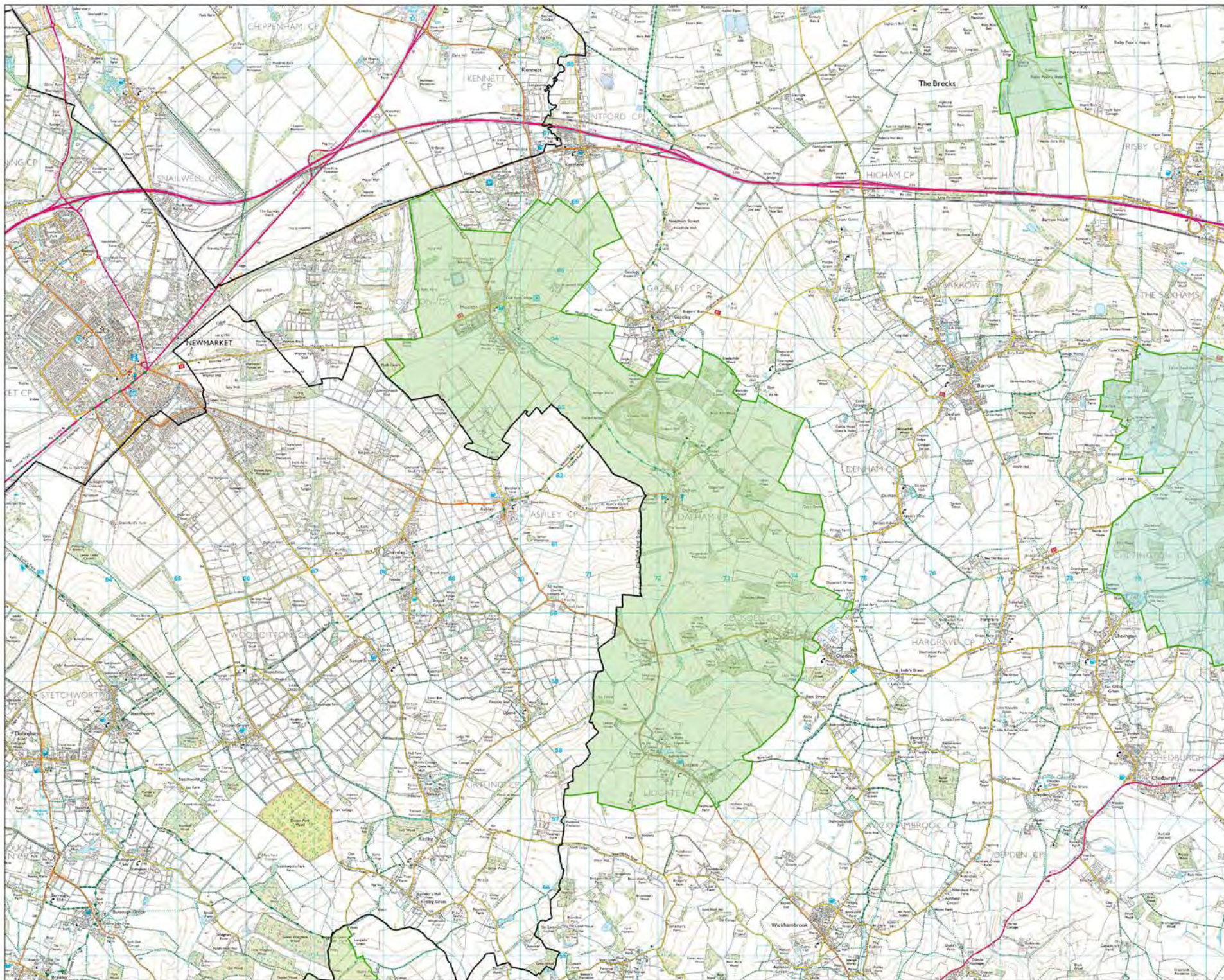


West Suffolk LCA

sheilsflynn

Valued Landscapes – detailed
boundary 05

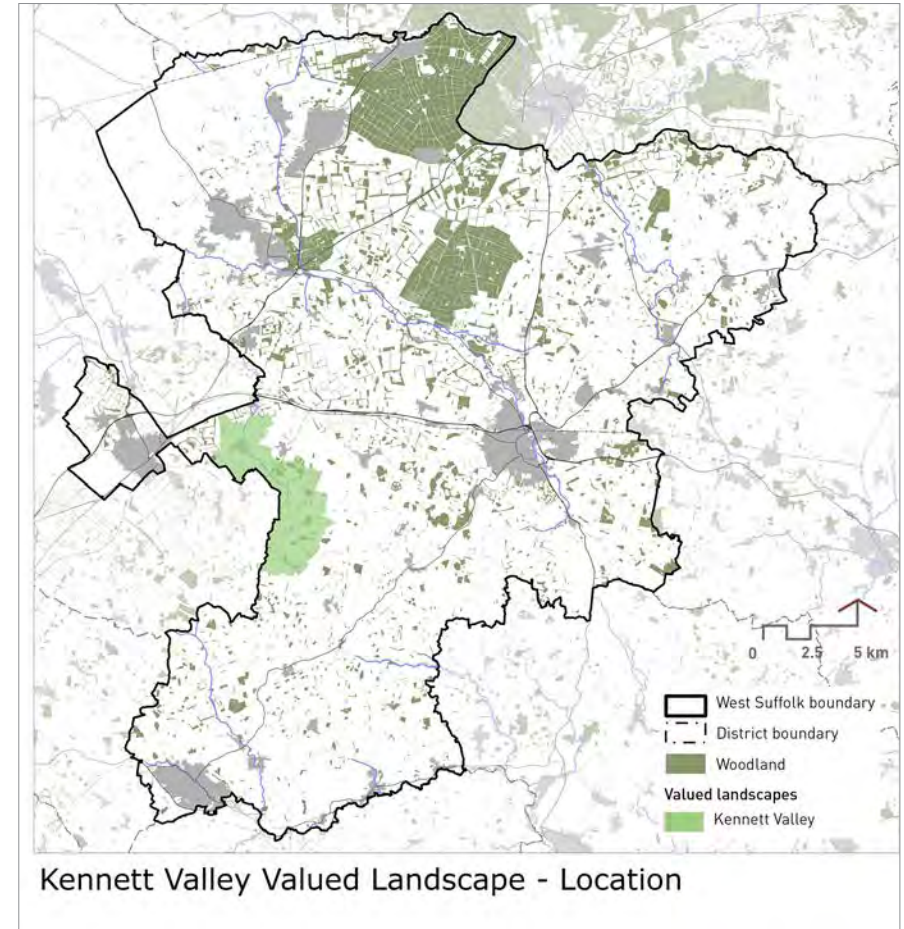
484-FS-10.6



Kennett Valley



Dalham House and church on the Kennett Valley slopes



Kennett Valley Valued Landscape - Location

Kennett Valley - Statement of Significance

The Kennett Valley within West Suffolk is a distinctive chalk stream valley where the expression of underlying chalk in the topography, free draining soils and beech woodlands is unusual in the context of the district as a whole. This well defined, inward looking valley has a strong visual unity, its generous rounded arable valley slopes are interspersed with blocks of broadleaved woodland, creating scenic land use patterns within which built landmarks form memorable views. Nestled within the landform are rural historic villages such as Dalham and Lidgate and the high incidence of knapped flint and thatch in vernacular buildings, reflect the underlying chalk geology and river setting.

Kennett Valley

Kennett Valley	
Drawing Reference: 05 Kennett Valley (484-FS-10.6) - Annex B. Detailed evaluation for EA5 - Annex C	
Boundary Description <p>Starting to the north on the B1085 at Landwades Stud the boundary follows hedgerows, the edge of woodland and farm track before joining Gazeley Road, following the southwestern side of the road as far as the Parish boundary. Here it heads southwest along hedgerows to then join Moulton Road. It continues along the northern side of the road before adopting field boundaries south and east to the edge of woodland that flanks The Street as it extends out of Gazeley. It includes this woodland along the road and continues east along hedgerows and then around the outside of Bluebutton and Blocksey Wood following the Icknield Way Trail. South of Desning Hall it follows farm tracks/rights of way, edge of woodlands and hedgerows, east and then south around to Coy's Grove and on to Denham Road. It crosses the road and continues along a farm track and hedgerows and woodland belt to the northeast of Ousden and a track to Front Street enabling the historic core of Ousden to be included. The boundary continues along the edge of woodland and public right of way to the western edge of Littly Wood and then along Back Street for a short distance before continuing to the south along the western side of a farm track and right of way and onto Bury Lane (once again for a short distance), before continuing along a field boundary and farm track to the boundary of Redhouse Farm on the outskirts of Lidgate. The boundary turns north along the eastern side of the road and then southwest and west along hedgerows and tracks, cross the narrow lane The Belt, to the south of Lidgate to join the West Suffolk administrative boundary. It then continues northwards along the administrative boundary following field boundaries, Old Suffolk Road, the northern side of Dalham Road and then further hedgerows. At Thrift Covert it diverts from the administrative boundary to the south and east of the wood before connecting and following the south side of Moulton Road eastwards. Before reaching Moulton it heads north along a hedgerow excluding the gallops at Folly Hill and connecting to the B1506. It follows the southern side of this road before adopting the western side of Chippenham Road and woodland belts heading east along the edge of Lanwades Stud. It connects with the B1085 following the southern side of the road back to the start point.</p>	
Boundary considerations	
Issues influencing the Boundary Line	<p>Key issues in defining the boundary have included:</p> <p>Transition in landscape from the valley slopes to the surrounding landscape plateau</p> <p>The boundary was extended to include features of interest on the upper slopes of the Kennett Valley, such as woodland and narrow, sometimes incised rural lanes, as well as areas with attractive elevated views across the valley. However, where the landscape starts to flatten out and the association with the valley lessens land has been excluded. The boundary has been drawn conservatively within this area of transition.</p>
Easily distinguished features	<p>Wherever possible the boundary adopts clearly defined features on the ground including the edge of woodland, hedgerows, roads and tracks. In a few places at the head of the valley it was not possible to follow a feature on the ground and still include the upper valley slopes which define the valley and setting to Lidgate.</p>

Kennett Valley	
Boundary considerations	
Administrative boundaries	The western side of the valued landscape follows the West Suffolk district boundary. In the main this boundary follows features on the ground although there are a few locations where this is not the case. The special qualities of the valued landscape continues beyond the administrative boundary to include the western half of the valley sides. In places Parish boundaries are also followed but always in association with other features such as field boundaries.
Settlements	<p>The villages of Moulton, Dalham, Ousden (in part) and Lidgate sit within the Kennett Valley and have been considered in detail. Moulton has an intact historic core but also includes a number of notable modern housing estates which has altered the settlement form. Nevertheless the central core retains a strong sense of place and the village sits within a high quality valley setting and is visually connected to the surrounding landscape. Dalham is included in its entirety due to its intact historic character, limited infill development and high quality setting.</p> <p>Ousden historic core around the church is included but not the more modern extension to the east which extends along the lane onto the surrounding plateau. Although settlement are not normally split in two, in this instance the Settlement Boundary is defined as two separate areas. On this basis the boundary of the valued landscape is proposed to include the historic part of the village which sits within the Kennett Valley. Lidgate sits within the upper slopes overlooking the valley, it is therefore surrounded by high quality landscape and is an intact village with a rare collection of cultural heritage assets connected to the landscape setting. It has been included in its entirety.</p>
Development	There are no known allocated development sites or planning permissions on the edges or within this area which have influenced the boundary.
Features of interest	<p>Desning Hall is a listed building associated with a moated site on the margins of the Kennett Valley. It was not included in the valued landscape as its aspect is northwards away from the valley and the context of the hall has been altered with the addition of modern farm buildings. The Roman Villa scheduled monument site southeast of Lidgate was not included as it is not a clear feature on the ground and makes a limited contribution to special qualities of the valley. Littly Wood County Wildlife Site was not included as it comprises conifer plantation and is located on the transitional landscape extending onto the plateau.</p> <p>All other historic and nature conservation sites within the Kennett Valley were included in the valued landscape including historic villages and notable areas of ancient woodland.</p>