

Project Number A-01988 (6947)

**Refurbishment and Demolition
Asbestos Survey Report**

**Laboratory Buildings
Lanwades Park
Newmarket
CB8 7UA**



Working in Partnership with Shield Services Group



Document Name	Author	Issued by	Revision Number	Issue Date	Page No
2022	David Kelly	Armour AS	0	07/12/2022	1

Contents

Section	
1	Contacts & Authorisation
2	Executive Summary
3	Site Description & Survey Information
4	Positive and Presumed Photos Sheets
5	Negative Photos Sheets
6	Survey Objectives
7	Survey Techniques
8	Survey Caveat
9	Survey Notes
10	Material Assessment Algorithm
11	Certificates of Bulk Analysis
12	Site Plan



Section 1: Contact Details

Client Details:		Instructing Party:	
<p>Lochailort Investments Ltd Lochailort Investments Ltd (Company Number: 05605197) Eagle House 108-110 Jermyn Street London SW1Y 6EE; and</p> <p>Such associated company of Locailhort Investments Ltd as is notified in writing to the consultant, and;</p> <p>Animal Health Trust (in Liquidation) (Royal Charter Company Number: RC000011 and Registered Charity Number: 209642) acting by the Receivers; and</p> <p>Andrew Burton Hughes and Julian Paul Smith of Alder King LLP (Company Number: OC306796) whose registered office is at, Pembroke House, Clifton, Bristol BS8 3BA acting in their capacity as joint receivers of the Premises (the "Receivers")</p>		<p>Lochailort Investments Ltd Eagle House 108-110 Jermyn Street London SW1Y 6EE</p>	
Contact Name:	Hugo Haig	Contact Name:	Hugo Haig
Tel: 0203 468 4933	Fax: N/A	Tel: 0203 468 4933	Fax: N/A

Site Address:		Report Author:	
<p>Laboratory Buildings Lanwades Park Newmarket CB8 7UA</p>		<p>Armour Analytical Services Unit 6 Guardian Street Industrial Estate Warrington WA5 1SJ</p>	
Contact Name:	Hugo Haig	Contact Name:	Andrea Bansee
Tel: 0203 468 4933	Fax: N/A	Mobile: 07468 535 836	

Lead Surveyor's Name:	Lead Surveyor's Authorising Signature:
David Kelly	

Document Name	Author	Issued by	Revision Number	Issue Date	Page No
2022	David Kelly	Armour AS	0	07/12/2022	3

Section 2: Executive Summary

Laboratory Buildings			
Sample Number	Sample Type	Location	Analysis
DK/01	Sink Pad - Bituminous Product	First Floor Room 58 001	N.A.D.I.S
DK/02	Floor Tiles - Vinyl Products	First Floor Stairwell 003	Chrysotile
DK/03	Floor Tiles and Adhesive - Vinyl Products	First Floor Landing and Corridor 004	Chrysotile
DK/04	Sink Pad - Bituminous Product	First Floor Room 62 007	N.A.D.I.S
DK/05	Foam Insulation to Ceiling - Insulation	First Floor Room 68 011	N.A.D.I.S
DK/06	Gater to Ductwork - Woven Product	First Floor Room 71 012	Chrysotile
DK/07	Putty to Ductwork Joints - PVC / Reinforced Plastics	Second Floor Boiler Room 014	N.A.D.I.S
DK/08	Bitumen Coating to Floor - Bituminous Product	Second Floor Boiler Room 015	N.A.D.I.S
DK/09	Floor Tiles - Vinyl Products	Ground Floor WC's x 2, Server Room and Switchroom 017	Chrysotile
DK/10	Inner Lining Panels to Cabinet - Insulating Board	Ground Floor Room 40 021	N.A.D.I.S
DK/11	Surrounds to Door - Insulating Board	Ground Floor Corridor 023	N.A.D.I.S
DK/12	Floor Tiles - Vinyl Products	Ground Floor Corridor and Room 41 024	Chrysotile
DK/13	Floor Tiles - Vinyl Products	First Floor Block A - Room 10 026	Chrysotile
DK/14	Rope Seal to Equipment - Gaskets (rope/woven)	Ground Floor Block A - Room 24 041	Chrysotile
DK/15	Wall Panels - Insulating Board	Ground Floor Water Shack 042	N.A.D.I.S
DK/16	Putty Flashguards - PVC / Reinforced Plastics	Ground Floor Kirkham Building - Switchroom 044	N.A.D.I.S
DK/17	Fiberboard Ceiling Panels - Paper Product	Ground Floor Stores Building- Stores x 3 048	N.A.D.I.S
DK/18	Soffit - Cement Product	External Stores Building 049	N.A.D.I.S
DK/19	Sink Pad - Bituminous Product	Ground Floor Stores Building- Lab 051	Chrysotile



Laboratory Buildings			
Sample Number	Sample Type	Location	Analysis
DK/20	Panel behind Boiler - Insulating Board	Ground Floor Office Hut - Boiler Room 052	N.A.D.I.S

N.A.D.I.S – No Asbestos Detected in Sample

A.D – Asbestos Detected

Document Name	Author	Issued by	Revision Number	Issue Date	Page No
2022	David Kelly	Armour AS	0	07/12/2022	5

Section 3: Site Description & Survey Information

Brief description on the general building construction

Concrete frame construction with plastic cladding and a felt flat roof. 4no

Caveat for no access areas

Limited damage possible as requested by the client.

EXTERNAL MATERIALS

Roof Type	Flat
Roof Materials	Non asbestos felt
Soffits	Cement
Fascia	Timber
Walls	Brick, Fiberglass Panels
Verge Under cloaking	None
Guttering	Plastic
Downpipes	Plastic
Window/Door frames	uPVC
Other Materials	N/A

INTERNAL MATERIALS

Loft Insulation	None
Roof Underlining	Non-Asbestos Felt
Ceilings	Plasterboard, Concrete, Timber
Walls <i>Internal</i>	Plasterboard, Solid, Timber
Floors	Floor Tiles, Concrete, Carpet, Lino
Doors/Frames	Timber
Pipework/Insulation	MMMF
Boxings	Timber, Plasterboard
Boiler Make	Modern AHU
Flue Pipes	Metal
Storage Heaters	Non asbestos
Electrical Boxes/Machinery	Non asbestos
Ducting/Risers	Metal
Stairs	Concrete
Lift Shafts	None
Other Materials	N/A

Section 4: Positive and Presumed Photos Sheets

Item No:	3	Sample No:	DK/02
Location:	Laboratory Buildings, First Floor - Stairwell 003		

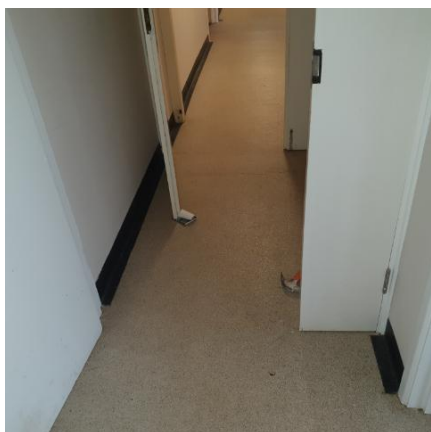


Material Description:	Floor Tiles - Vinyl Products	
Identification:	Sampled - Asbestos Detected	
Approx. quantity:	10 m ²	
Accessibility	Difficult	Assessment Score
Product type:	Vinyl	1
Extent of Damage:	Slight / minor damage	1
Surface Treatment:	Non-friable	0
Asbestos type:	Chrysotile	1
Material Assessment Score:		3
Risk Assessment Score:		Negligible
Action:	Remove	
Comments:	Under lino to stairs	

Document Name	Author	Issued by	Revision Number	Issue Date	Page No
2022	David Kelly	Armour AS	0	07/12/2022	7

Item No: 4

Sample No: DK/03

Location: Laboratory Buildings, First Floor - Landing and Corridor 004


Material Description:	Floor Tiles and Adhesive - Vinyl Products	
Identification:	Sampled - Asbestos Detected	
Approx. quantity:	26 m ²	
Accessibility	Difficult	Assessment Score
Product type:	Vinyl	1
Extent of Damage:	Slight / minor damage	1
Surface Treatment:	Non-friable	0
Asbestos type:	Chrysotile	1
Material Assessment Score:		3
Risk Assessment Score:		Negligible
Action:	Remove	
Comments:	Under lino and screed. Limited access under lino flooring as limited damage was possible - May be found under screed throughout. Limited access in and around ductwork above timber ceilings in corridor - Apply caution	

Document Name	Author	Issued by	Revision Number	Issue Date	Page No
2022	David Kelly	Armour AS	0	07/12/2022	8

Item No: 12

Sample No: DK/06

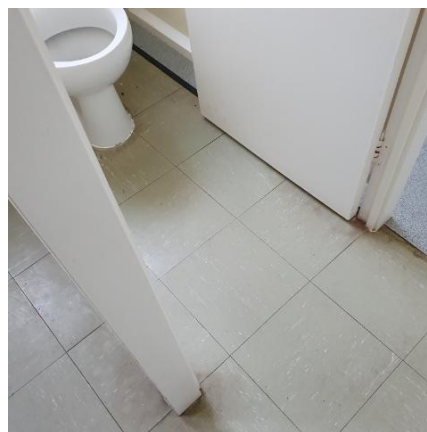
Location: Laboratory Buildings, First Floor - Room 71 012



Material Description:	Gater to Ductwork - Woven Product	
Identification:	Sampled - Asbestos Detected	
Approx. quantity:	Throughout ductwork	
Accessibility	Difficult	Assessment Score
Product type:	Rope	2
Extent of Damage:	Slight / minor damage	1
Surface Treatment:	Woven Material	1
Asbestos type:	Chrysotile	1
Material Assessment Score:		5
Risk Assessment Score:		Low
Action:	Remove	
Comments:	To ductwork throughout ceiling voids	

Item No: 17 **Sample No:** DK/09

Location: Laboratory Buildings, Ground Floor - WC's x 2, Server Room and Switchroom 017

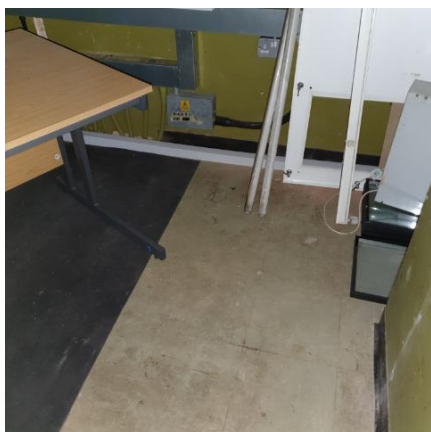


Material Description:	Floor Tiles - Vinyl Products	
Identification:	Sampled - Asbestos Detected	
Approx. quantity:	36 m ²	
Accessibility	Easy	<i>Assessment Score</i>
Product type:	Vinyl	1
Extent of Damage:	Slight / minor damage	1
Surface Treatment:	Non-friable	0
Asbestos type:	Chrysotile	1
Material Assessment Score:		3
Risk Assessment Score:		Negligible
Action:	Remove	
Comments:	Concrete ceiling, solid and timber walls, modern electrics	

Document Name	Author	Issued by	Revision Number	Issue Date	Page No
2022	David Kelly	Armour AS	0	07/12/2022	10

Item No: 18

Sample No: N/A

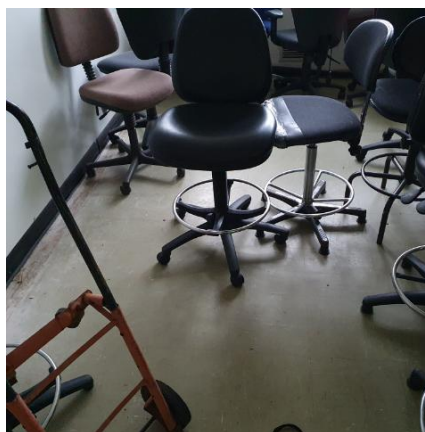
Location: Laboratory Buildings, Ground Floor - Understairs
Cupboard 018


Material Description:	Floor Tiles - Vinyl Products	
Identification:	As per sample DK/09 - Asbestos Detected	
Approx. quantity:	6 m ²	
Accessibility	Easy	Assessment Score
Product type:	Vinyl	1
Extent of Damage:	Slight / minor damage	1
Surface Treatment:	Non-friable	0
Asbestos type:	Chrysotile	1
Material Assessment Score:		3
Risk Assessment Score:		Negligible
Action:	Remove	
Comments:	Non asbestos electrics	

Item No: 20

Sample No: N/A

Location: Laboratory Buildings, Ground Floor - Understairs
Cupboard 020



Material Description:	Floor Tiles - Vinyl Products	
Identification:	As per sample DK/09 - Asbestos Detected	
Approx. quantity:	45 m ²	
Accessibility	Easy	Assessment Score
Product type:	Vinyl	1
Extent of Damage:	Slight / minor damage	1
Surface Treatment:	Non-friable	0
Asbestos type:	Chrysotile	1
Material Assessment Score:		3
Risk Assessment Score:		Negligible
Action:	Remove	
Comments:	N/A	

Document Name	Author	Issued by	Revision Number	Issue Date	Page No
2022	David Kelly	Armour AS	0	07/12/2022	12

Item No: 22

Sample No: N/A

Location: Laboratory Buildings, Ground Floor - Rooms 52 and 52A
022

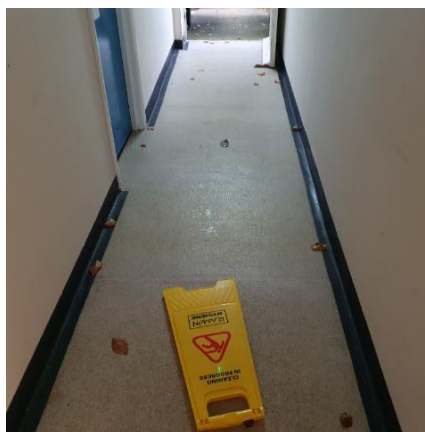
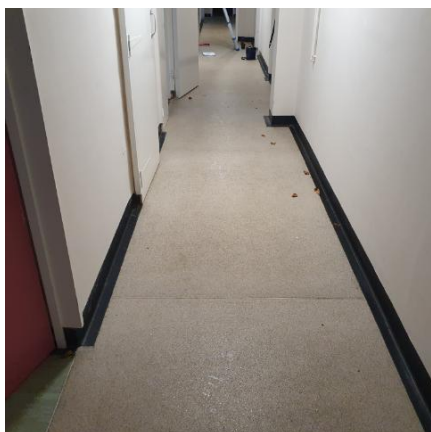


Material Description:	Floor Tiles - Vinyl Products	
Identification:	As per sample DK/09 - Asbestos Detected	
Approx. quantity:	72 m ²	
Accessibility	Difficult	Assessment Score
Product type:	Vinyl	1
Extent of Damage:	Slight / minor damage	1
Surface Treatment:	Non-friable	0
Asbestos type:	Chrysotile	1
Material Assessment Score:		3
Risk Assessment Score:		Negligible
Action:	Remove	
Comments:	Under modern lino	

Document Name	Author	Issued by	Revision Number	Issue Date	Page No
2022	David Kelly	Armour AS	0	07/12/2022	13

Item No: 24

Sample No: DK/12

Location: Laboratory Buildings, Ground Floor - Corridor and Room 41 024


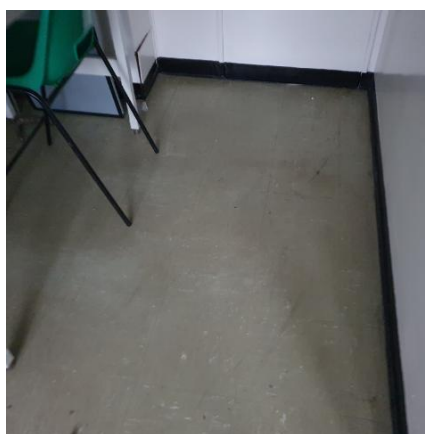
Material Description:	Floor Tiles - Vinyl Products	
Identification:	Sampled - Asbestos Detected	
Approx. quantity:	30 m ²	
Accessibility	Difficult	<i>Assessment Score</i>
Product type:	Vinyl	1
Extent of Damage:	Slight / minor damage	1
Surface Treatment:	Non-friable	0
Asbestos type:	Chrysotile	1
Material Assessment Score:		3
Risk Assessment Score:		Negligible
Action:	Remove	
Comments:	Under modern lino	

Document Name	Author	Issued by	Revision Number	Issue Date	Page No
2022	David Kelly	Armour AS	0	07/12/2022	14

Item No: 26

Sample No: DK/13

Location: Laboratory Buildings, First Floor - Block A - Room 10
026

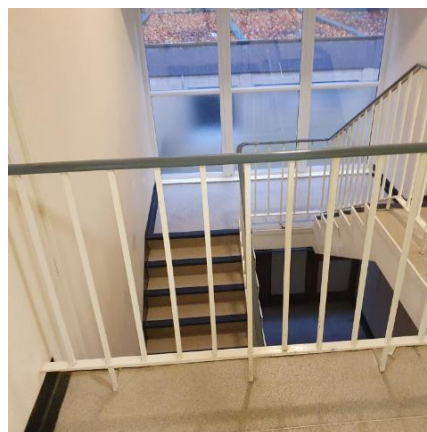


Material Description:	Floor Tiles - Vinyl Products	
Identification:	Sampled - Asbestos Detected	
Approx. quantity:	24 m ²	
Accessibility	Difficult	Assessment Score
Product type:	Vinyl	1
Extent of Damage:	Slight / minor damage	1
Surface Treatment:	Non-friable	0
Asbestos type:	Chrysotile	1
Material Assessment Score:		3
Risk Assessment Score:		Negligible
Action:	Remove	
Comments:	Under modern lino	

Document Name	Author	Issued by	Revision Number	Issue Date	Page No
2022	David Kelly	Armour AS	0	07/12/2022	15

Item No: 28 **Sample No:** N/A

Location: Laboratory Buildings, First Floor - Block A - Corridor,
Landing and Stairwell 028



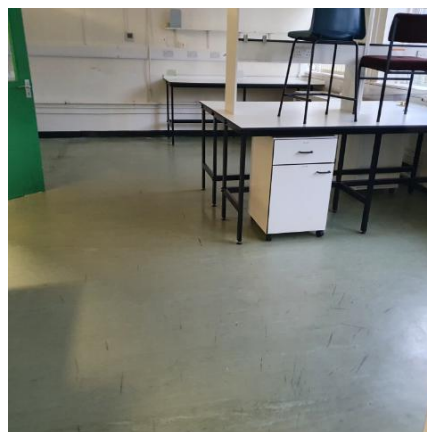
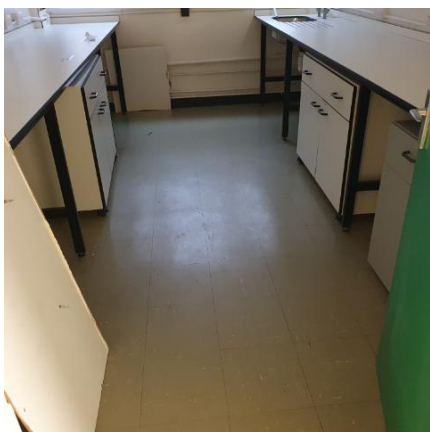
Material Description:	Floor Tiles - Vinyl Products	
Identification:	As per sample DK/13 - Asbestos Detected	
Approx. quantity:	42 m ²	
Accessibility	Difficult	Assessment Score
Product type:	Vinyl	1
Extent of Damage:	Slight / minor damage	1
Surface Treatment:	Non-friable	0
Asbestos type:	Chrysotile	1
Material Assessment Score:		3
Risk Assessment Score:		Negligible
Action:	Remove	
Comments:	Under modern lino. Modern electrics. Plasterboard, solid and timber walls, timber ceiling with concrete above	

Document Name	Author	Issued by	Revision Number	Issue Date	Page No
2022	David Kelly	Armour AS	0	07/12/2022	16

Item No: 29

Sample No: N/A

Location: Laboratory Buildings, First Floor - Block A - Rooms 2, 3, 4, 12 and 13 029



Material Description:	Floor Tiles - Vinyl Products	
Identification:	As per sample DK/13 - Asbestos Detected	
Approx. quantity:	124 m ²	
Accessibility	Difficult	Assessment Score
Product type:	Vinyl	1
Extent of Damage:	Slight / minor damage	1
Surface Treatment:	Non-friable	0
Asbestos type:	Chrysotile	1
Material Assessment Score:		3
Risk Assessment Score:		Negligible
Action:	Remove	
Comments:	Under modern lino in 12/13.	

Document Name	Author	Issued by	Revision Number	Issue Date	Page No
2022	David Kelly	Armour AS	0	07/12/2022	17

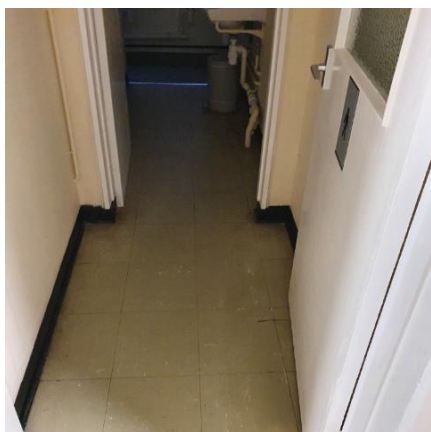
Item No:	31	Sample No:	N/A
Location:	Laboratory Buildings, Ground Floor - Block A - Rooms 5,6,7,8, 14 and 15 031		



Material Description:	Floor Tiles - Vinyl Products	
Identification:	As per sample DK/13 - Asbestos Detected	
Approx. quantity:	62 m ²	
Accessibility	Easy	Assessment Score
Product type:	Vinyl	1
Extent of Damage:	Slight / minor damage	1
Surface Treatment:	Non-friable	0
Asbestos type:	Chrysotile	1
Material Assessment Score:		3
Risk Assessment Score:		Negligible
Action:	Remove	
Comments:	N/A	

Item No: 32

Sample No: N/A

Location: Laboratory Buildings, Ground Floor - Block A - Rooms 25, 16, 17 and 18 032


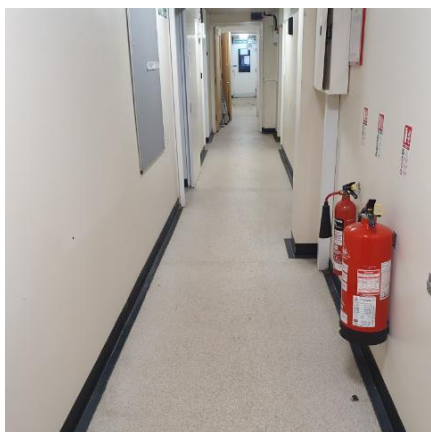
Material Description:	Floor Tiles - Vinyl Products	
Identification:	As per sample DK/13 - Asbestos Detected	
Approx. quantity:	m ²	
Accessibility	Easy	Assessment Score
Product type:	Vinyl	1
Extent of Damage:	Slight / minor damage	1
Surface Treatment:	Non-friable	0
Asbestos type:	Chrysotile	1
Material Assessment Score:		3
Risk Assessment Score:		Negligible
Action:	Remove	
Comments:	Under lino and exposed. Non asbestos electrics	

Document Name	Author	Issued by	Revision Number	Issue Date	Page No
2022	David Kelly	Armour AS	0	07/12/2022	19

Item No: 33

Sample No: N/A

Location: Laboratory Buildings, Ground Floor - Block A - Corridor 033



Material Description:	Floor Tiles - Vinyl Products	
Identification:	As per sample DK/13 - Asbestos Detected	
Approx. quantity:	42 m ²	
Accessibility	Easy	Assessment Score
Product type:	Vinyl	1
Extent of Damage:	Slight / minor damage	1
Surface Treatment:	Non-friable	0
Asbestos type:	Chrysotile	1
Material Assessment Score:		3
Risk Assessment Score:		Negligible
Action:	Remove	
Comments:	Under lino. Plasterboard and solid walls.	

Document Name	Author	Issued by	Revision Number	Issue Date	Page No
2022	David Kelly	Armour AS	0	07/12/2022	20

Item No: 34

Sample No: N/A

Location: Laboratory Buildings, Ground Floor - Block A - Room 20
034



Material Description:	Floor Tiles - Vinyl Products	
Identification:	As per sample DK/13 - Asbestos Detected	
Approx. quantity:	10 m ²	
Accessibility	Easy	Assessment Score
Product type:	Vinyl	1
Extent of Damage:	Slight / minor damage	1
Surface Treatment:	Non-friable	0
Asbestos type:	Chrysotile	1
Material Assessment Score:		3
Risk Assessment Score:		Negligible
Action:	Remove	
Comments:	N/A	

Document Name	Author	Issued by	Revision Number	Issue Date	Page No
2022	David Kelly	Armour AS	0	07/12/2022	21

Item No:	35	Sample No:	N/A
Location:	Laboratory Buildings, Ground Floor - Block A - Rooms 28 and 29 035		



Material Description:	Floor Tiles - Vinyl Products	
Identification:	As per sample DK/13 - Asbestos Detected	
Approx. quantity:	35 m ²	
Accessibility	Difficult	Assessment Score
Product type:	Vinyl	1
Extent of Damage:	Slight / minor damage	1
Surface Treatment:	Non-friable	0
Asbestos type:	Chrysotile	1
Material Assessment Score:		3
Risk Assessment Score:		Negligible
Action:	Remove	
Comments:	Under modern lino	

Document Name	Author	Issued by	Revision Number	Issue Date	Page No
2022	David Kelly	Armour AS	0	07/12/2022	22

Item No: 37

Sample No: N/A

Location: Laboratory Buildings, Ground Floor - Block A - Room 32
037



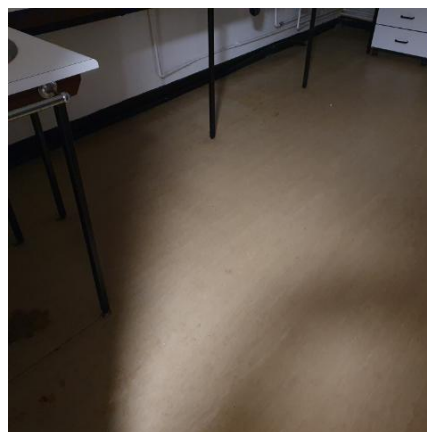
Material Description:	Floor Tiles - Vinyl Products	
Identification:	As per sample DK/13 - Asbestos Detected	
Approx. quantity:	20 m ²	
Accessibility	Difficult	Assessment Score
Product type:	Vinyl	1
Extent of Damage:	Slight / minor damage	1
Surface Treatment:	Non-friable	0
Asbestos type:	Chrysotile	1
Material Assessment Score:		3
Risk Assessment Score:		Negligible
Action:	Remove	
Comments:	Under modern lino	

Document Name	Author	Issued by	Revision Number	Issue Date	Page No
2022	David Kelly	Armour AS	0	07/12/2022	23

Item No: 38

Sample No: N/A

Location: Laboratory Buildings, Ground Floor - Block A - Room 21
038



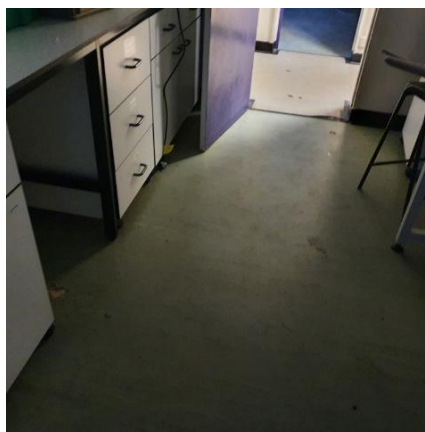
Material Description:	Floor Tiles - Vinyl Products	
Identification:	As per sample DK/13 - Asbestos Detected	
Approx. quantity:	20 m ²	
Accessibility	Difficult	Assessment Score
Product type:	Vinyl	1
Extent of Damage:	Slight / minor damage	1
Surface Treatment:	Non-friable	0
Asbestos type:	Chrysotile	1
Material Assessment Score:		3
Risk Assessment Score:		Negligible
Action:	Remove	
Comments:	Under modern lino	

Document Name	Author	Issued by	Revision Number	Issue Date	Page No
2022	David Kelly	Armour AS	0	07/12/2022	24

Item No: 40

Sample No: N/A

Location: Laboratory Buildings, Ground Floor - Block A - Room 22
040



Material Description:	Floor Tiles - Vinyl Products	
Identification:	As per sample DK/13 - Asbestos Detected	
Approx. quantity:	12 m ²	
Accessibility	Difficult	Assessment Score
Product type:	Vinyl	1
Extent of Damage:	Slight / minor damage	1
Surface Treatment:	Non-friable	0
Asbestos type:	Chrysotile	1
Material Assessment Score:		3
Risk Assessment Score:		Negligible
Action:	Remove	
Comments:	Under modern lino	

Document Name	Author	Issued by	Revision Number	Issue Date	Page No
2022	David Kelly	Armour AS	0	07/12/2022	25

Item No: 41

Sample No: DK/14

Location: Laboratory Buildings, Ground Floor - Block A - Room 24
041


Material Description:	Rope Seal to Equipment - Gaskets (rope/woven)	
Identification:	Sampled - Asbestos Detected	
Approx. quantity:	1 no	
Accessibility	Difficult	Assessment Score
Product type:	Rope	2
Extent of Damage:	Slight / minor damage	1
Surface Treatment:	Woven Material	1
Asbestos type:	Chrysotile	1
Material Assessment Score:		5
Risk Assessment Score:		Low
Action:	Remove	
Comments:	Concrete under lino	

Document Name	Author	Issued by	Revision Number	Issue Date	Page No
2022	David Kelly	Armour AS	0	07/12/2022	26

Item No: 51

Sample No: DK/19

Location: Laboratory Buildings, Ground Floor - Stores Building-
Lab 051


Material Description:	Sink Pad - Bituminous Product	
Identification:	Sampled - Asbestos Detected	
Approx. quantity:	1 no	
Accessibility	Medium	Assessment Score
Product type:	Bitumen	1
Extent of Damage:	Moderate damage	2
Surface Treatment:	Non-friable	0
Asbestos type:	Chrysotile	1
Material Assessment Score:		4
Risk Assessment Score:		Negligible
Action:	Remove	
Comments:	Plasterboard ceiling	

Document Name	Author	Issued by	Revision Number	Issue Date	Page No
2022	David Kelly	Armour AS	0	07/12/2022	27

Section 5: Negative Photos Sheets

Item No:	1	Sample No:	DK/01
Location:	Laboratory Buildings, First Floor - Room 58 001		



Material Description:	Sink Pad - Bituminous Product	
Identification:	Sampled - No Asbestos Found	
Approx. quantity:	N/A	
Accessibility	N/A	<i>Assessment Score</i>
Product type:	N/A	N/A
Extent of Damage:	N/A	N/A
Surface Treatment:	N/A	N/A
Asbestos type:	N/A	N/A
Material Assessment Score:		N/A
Risk Assessment Score:		N/A
Action:	N/A	
Comments:	Solid walls, concrete ceiling, concrete under lino, plasterboard boxing with plastic pipework.	

Document Name	Author	Issued by	Revision Number	Issue Date	Page No
2022	David Kelly	Armour AS	0	07/12/2022	28

Item No:	2	Sample No:	N/A
Location:	Laboratory Buildings, First Floor - Rooms 56 and 57 002		



Material Description:	No Suspect Materials Found	
Identification:	N/A	
Approx. quantity:	N/A	
Accessibility	N/A	<i>Assessment Score</i>
Product type:	N/A	N/A
Extent of Damage:	N/A	N/A
Surface Treatment:	N/A	N/A
Asbestos type:	N/A	N/A
Material Assessment Score:		N/A
Risk Assessment Score:		N/A
Action:	N/A	
Comments:	Plastic pipe in timber boxing. Concrete under lino	

Item No:	5	Sample No:	N/A
Location:	Laboratory Buildings, First Floor - Room 64 005		



Material Description:	No Suspect Materials Found	
Identification:	N/A	
Approx. quantity:	N/A	
Accessibility	N/A	<i>Assessment Score</i>
Product type:	N/A	N/A
Extent of Damage:	N/A	N/A
Surface Treatment:	N/A	N/A
Asbestos type:	N/A	N/A
Material Assessment Score:		N/A
Risk Assessment Score:		N/A
Action:	N/A	
Comments:	N/A	

Item No:	6	Sample No:	N/A
Location:	Laboratory Buildings, First Floor - Rooms 59 and 60 006		



Material Description:	No Suspect Materials Found	
Identification:	N/A	
Approx. quantity:	N/A	
Accessibility	N/A	<i>Assessment Score</i>
Product type:	N/A	N/A
Extent of Damage:	N/A	N/A
Surface Treatment:	N/A	N/A
Asbestos type:	N/A	N/A
Material Assessment Score:		N/A
Risk Assessment Score:		N/A
Action:	N/A	
Comments:	N/A	

Item No: 7

Sample No: DK/04

Location: Laboratory Buildings, First Floor - Room 62 007



Material Description:	Sink Pad - Bituminous Product	
Identification:	Sampled - No Asbestos Found	
Approx. quantity:	N/A	
Accessibility	N/A	<i>Assessment Score</i>
Product type:	N/A	N/A
Extent of Damage:	N/A	N/A
Surface Treatment:	N/A	N/A
Asbestos type:	N/A	N/A
Material Assessment Score:		N/A
Risk Assessment Score:		N/A
Action:	N/A	
Comments:	Plasterboard and concrete ceiling. Concrete under lino. Plasterboard and solid walls.	

Item No: 8

Sample No: N/A

Location: Laboratory Buildings, First Floor - Rooms 61 008



Material Description:	No Suspect Materials Found	
Identification:	N/A	
Approx. quantity:	N/A	
Accessibility	N/A	<i>Assessment Score</i>
Product type:	N/A	N/A
Extent of Damage:	N/A	N/A
Surface Treatment:	N/A	N/A
Asbestos type:	N/A	N/A
Material Assessment Score:		N/A
Risk Assessment Score:		N/A
Action:	N/A	
Comments:	N/A	

Item No: 9

Sample No: N/A

Location: Laboratory Buildings, First Floor - Rooms 65 009



Material Description:	No Suspect Materials Found	
Identification:	N/A	
Approx. quantity:	N/A	
Accessibility	N/A	<i>Assessment Score</i>
Product type:	N/A	N/A
Extent of Damage:	N/A	N/A
Surface Treatment:	N/A	N/A
Asbestos type:	N/A	N/A
Material Assessment Score:		N/A
Risk Assessment Score:		N/A
Action:	N/A	
Comments:	N/A	

Item No:	10	Sample No:	N/A
Location:	Laboratory Buildings, First Floor - Cold Stores x 2 010		



Material Description:	No Suspect Materials Found	
Identification:	N/A	
Approx. quantity:	N/A	
Accessibility	N/A	<i>Assessment Score</i>
Product type:	N/A	N/A
Extent of Damage:	N/A	N/A
Surface Treatment:	N/A	N/A
Asbestos type:	N/A	N/A
Material Assessment Score:		N/A
Risk Assessment Score:		N/A
Action:	N/A	
Comments:	Metal walls and ceiling. No access within freezer casings.	

Item No: 11

Sample No: DK/05

Location: Laboratory Buildings, First Floor - Room 68 011



Material Description:	Foam Insulation to Ceiling - Insulation	
Identification:	Sampled - No Asbestos Found	
Approx. quantity:	N/A	
Accessibility	N/A	<i>Assessment Score</i>
Product type:	N/A	N/A
Extent of Damage:	N/A	N/A
Surface Treatment:	N/A	N/A
Asbestos type:	N/A	N/A
Material Assessment Score:		N/A
Risk Assessment Score:		N/A
Action:	N/A	
Comments:	Found throughout ceiling voids.	

Item No: 13

Sample No: N/A

Location: Laboratory Buildings, First Floor - Rooms 70, 73 and 74 013



Material Description:	No Suspect Materials Found	
Identification:	N/A	
Approx. quantity:	N/A	
Accessibility	N/A	<i>Assessment Score</i>
Product type:	N/A	N/A
Extent of Damage:	N/A	N/A
Surface Treatment:	N/A	N/A
Asbestos type:	N/A	N/A
Material Assessment Score:		N/A
Risk Assessment Score:		N/A
Action:	N/A	
Comments:	Non asbestos electrical boxes	

Item No:	14	Sample No:	DK/07
Location:	Laboratory Buildings, Second Floor - Boiler Room 014		



Material Description:	Putty to Ductwork Joints - PVC / Reinforced Plastics	
Identification:	Sampled - No Asbestos Found	
Approx. quantity:	N/A	
Accessibility	N/A	<i>Assessment Score</i>
Product type:	N/A	N/A
Extent of Damage:	N/A	N/A
Surface Treatment:	N/A	N/A
Asbestos type:	N/A	N/A
Material Assessment Score:		N/A
Risk Assessment Score:		N/A
Action:	N/A	
Comments:	Treat as uniform to ductwork throughout	

Item No:	15	Sample No:	DK/08
Location:	Laboratory Buildings, Second Floor - Boiler Room 015		



Material Description:	Bitumen Coating to Floor - Bituminous Product	
Identification:	Sampled - No Asbestos Found	
Approx. quantity:	N/A	
Accessibility	N/A	<i>Assessment Score</i>
Product type:	N/A	N/A
Extent of Damage:	N/A	N/A
Surface Treatment:	N/A	N/A
Asbestos type:	N/A	N/A
Material Assessment Score:		N/A
Risk Assessment Score:		N/A
Action:	N/A	
Comments:	Non asbestos felt to underside of roof	

Item No: 16

Sample No: N/A

Location: Laboratory Buildings, First Floor - Link Corridor 016

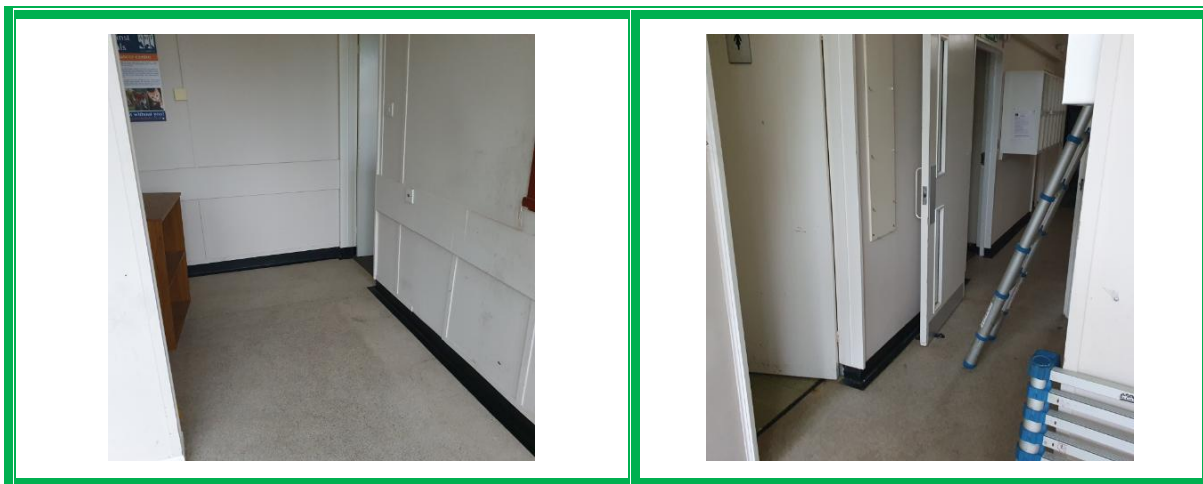


Material Description:	No Suspect Materials Found	
Identification:	N/A	
Approx. quantity:	N/A	
Accessibility	N/A	<i>Assessment Score</i>
Product type:	N/A	N/A
Extent of Damage:	N/A	N/A
Surface Treatment:	N/A	N/A
Asbestos type:	N/A	N/A
Material Assessment Score:		N/A
Risk Assessment Score:		N/A
Action:	N/A	
Comments:	N/A	

Item No: 19

Sample No: N/A

Location: Laboratory Buildings, Ground Floor - Entrance Lobby
019



Material Description:	No Suspect Materials Found	
Identification:	N/A	
Approx. quantity:	N/A	
Accessibility	N/A	<i>Assessment Score</i>
Product type:	N/A	N/A
Extent of Damage:	N/A	N/A
Surface Treatment:	N/A	N/A
Asbestos type:	N/A	N/A
Material Assessment Score:		N/A
Risk Assessment Score:		N/A
Action:	N/A	
Comments:	Non asbestos acoustic ceiling tiles on concrete. Concrete below lino. Plasterboard, timber, and solid walls.	

Item No: 21

Sample No: DK/10

Location: Laboratory Buildings, Ground Floor - Room 40 021



Material Description:	Inner Lining Panels to Cabinet - Insulating Board	
Identification:	Sampled - No Asbestos Found	
Approx. quantity:	N/A	
Accessibility	N/A	Assessment Score
Product type:	N/A	N/A
Extent of Damage:	N/A	N/A
Surface Treatment:	N/A	N/A
Asbestos type:	N/A	N/A
Material Assessment Score:		N/A
Risk Assessment Score:		N/A
Action:	N/A	
Comments:	Limited access within ductwork	

Item No: 23

Sample No: DK/11

Location: Laboratory Buildings, Ground Floor - Corridor 023

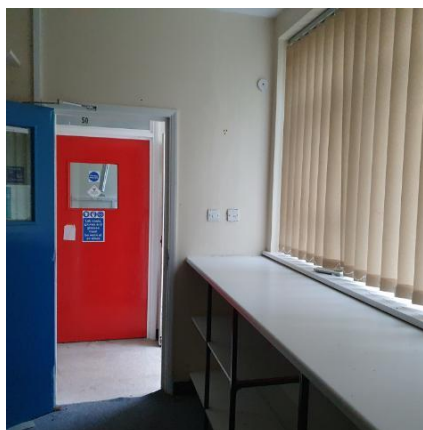
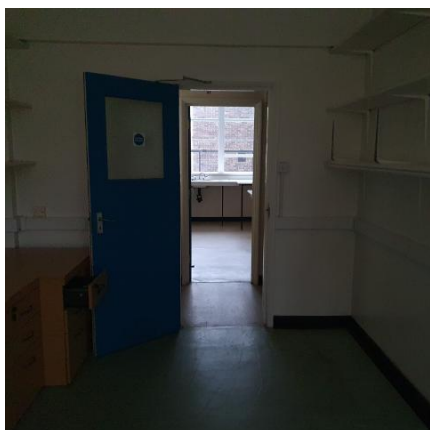


Material Description:	Surrounds to Door - Insulating Board	
Identification:	Sampled - No Asbestos Found	
Approx. quantity:	N/A	
Accessibility	N/A	<i>Assessment Score</i>
Product type:	N/A	N/A
Extent of Damage:	N/A	N/A
Surface Treatment:	N/A	N/A
Asbestos type:	N/A	N/A
Material Assessment Score:		N/A
Risk Assessment Score:		N/A
Action:	N/A	
Comments:	Timber ductwork boxing.	

Item No: 25

Sample No: N/A

Location: Laboratory Buildings, Ground Floor - Rooms x 4 025



Material Description:	No Suspect Materials Found	
Identification:	N/A	
Approx. quantity:	N/A	
Accessibility	N/A	<i>Assessment Score</i>
Product type:	N/A	N/A
Extent of Damage:	N/A	N/A
Surface Treatment:	N/A	N/A
Asbestos type:	N/A	N/A
Material Assessment Score:		N/A
Risk Assessment Score:		N/A
Action:	N/A	
Comments:	N/A	

Item No:	27	Sample No:	N/A
Location:	Laboratory Buildings, First Floor - Block A - Room 1027		

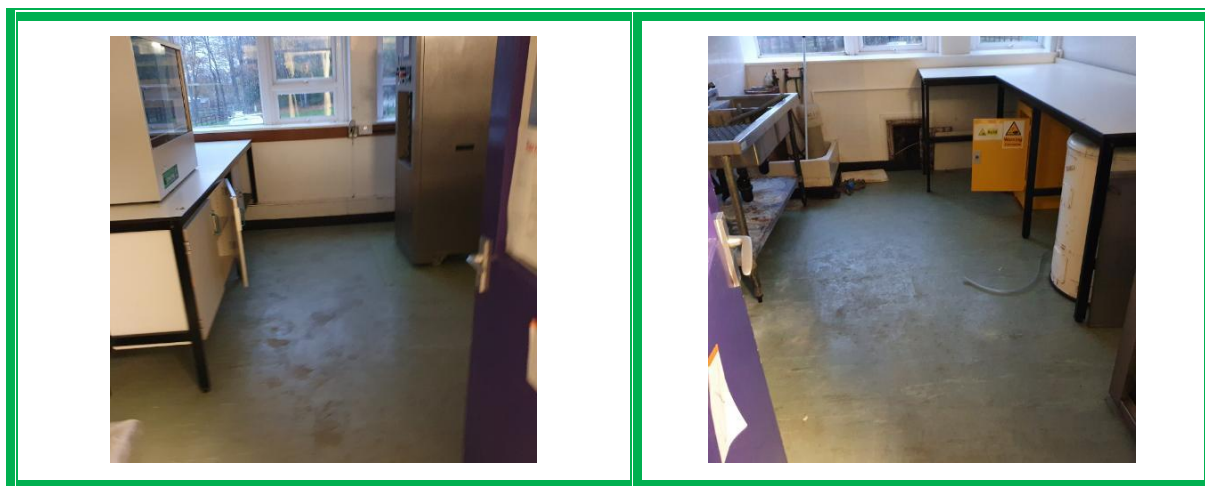


Material Description:	No Suspect Materials Found	
Identification:	N/A	
Approx. quantity:	N/A	
Accessibility	N/A	<i>Assessment Score</i>
Product type:	N/A	N/A
Extent of Damage:	N/A	N/A
Surface Treatment:	N/A	N/A
Asbestos type:	N/A	N/A
Material Assessment Score:		N/A
Risk Assessment Score:		N/A
Action:	N/A	
Comments:	Concrete under lino. Solid and plasterboard walls	

Item No: 36

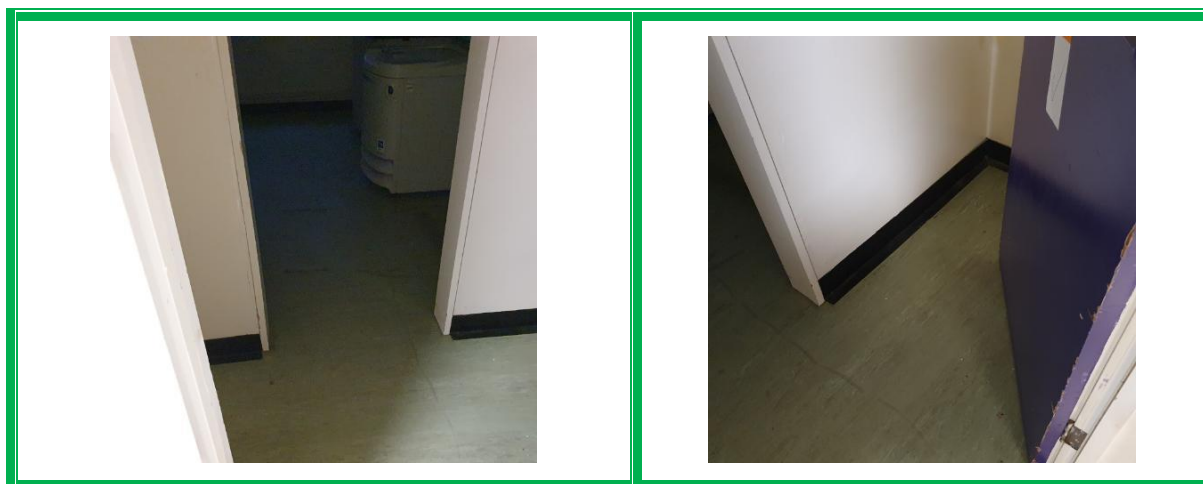
Sample No: N/A

Location: Laboratory Buildings, Ground Floor - Block A -
Rooms 30 and 31 036



Material Description:	No Suspect Materials Found	
Identification:	N/A	
Approx. quantity:	N/A	
Accessibility	N/A	<i>Assessment Score</i>
Product type:	N/A	N/A
Extent of Damage:	N/A	N/A
Surface Treatment:	N/A	N/A
Asbestos type:	N/A	N/A
Material Assessment Score:		N/A
Risk Assessment Score:		N/A
Action:	N/A	
Comments:	Non asbestos electrics, pipework, and equipment	

Item No:	39	Sample No:	N/A
Location:	Laboratory Buildings, Ground Floor - Block A - Room 23 039		



Material Description:	No Suspect Materials Found	
Identification:	N/A	
Approx. quantity:	N/A	
Accessibility	N/A	<i>Assessment Score</i>
Product type:	N/A	N/A
Extent of Damage:	N/A	N/A
Surface Treatment:	N/A	N/A
Asbestos type:	N/A	N/A
Material Assessment Score:		N/A
Risk Assessment Score:		N/A
Action:	N/A	
Comments:	N/A	

Item No:	42	Sample No:	DK/15
Location:	Laboratory Buildings, Ground Floor - Water Shack 042		

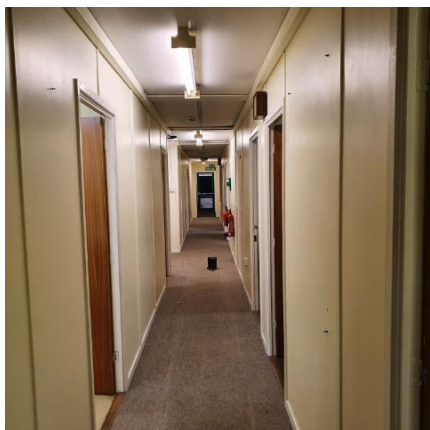


Material Description:	Wall Panels - Insulating Board	
Identification:	Sampled - No Asbestos Found	
Approx. quantity:	N/A	
Accessibility	N/A	Assessment Score
Product type:	N/A	N/A
Extent of Damage:	N/A	N/A
Surface Treatment:	N/A	N/A
Asbestos type:	N/A	N/A
Material Assessment Score:		N/A
Risk Assessment Score:		N/A
Action:	N/A	
Comments:	Timber ceiling, non-asbestos electrics	

Item No: 43

Sample No: N/A

Location: Laboratory Buildings, Ground Floor - Kirkham
Building - All Rooms 043

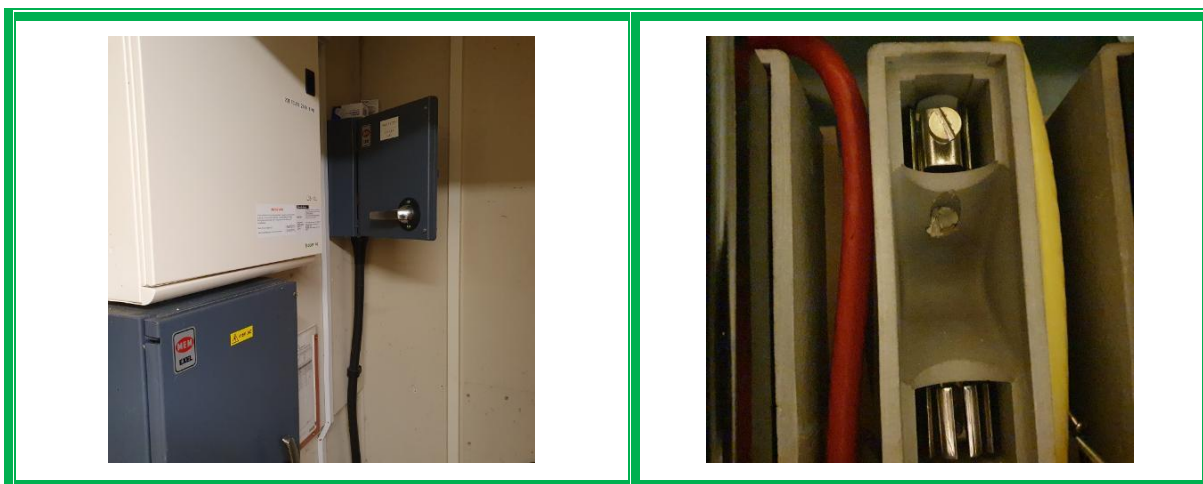


Material Description:	No Suspect Materials Found	
Identification:	N/A	
Approx. quantity:	N/A	
Accessibility	N/A	<i>Assessment Score</i>
Product type:	N/A	N/A
Extent of Damage:	N/A	N/A
Surface Treatment:	N/A	N/A
Asbestos type:	N/A	N/A
Material Assessment Score:		N/A
Risk Assessment Score:		N/A
Action:	N/A	
Comments:	Plasterboard ceilings and walls. Concrete under non asbestos floorings. Fiberglass external wall cladding.	

Item No: 44

Sample No: DK/16

Location: Laboratory Buildings, Ground Floor - Kirkham
Building - Switchroom 044



Material Description:	Putty Flashguards - PVC / Reinforced Plastics	
Identification:	Sampled - No Asbestos Found	
Approx. quantity:	N/A	
Accessibility	N/A	Assessment Score
Product type:	N/A	N/A
Extent of Damage:	N/A	N/A
Surface Treatment:	N/A	N/A
Asbestos type:	N/A	N/A
Material Assessment Score:		N/A
Risk Assessment Score:		N/A
Action:	N/A	
Comments:	Withing electrical boxes	

Item No:	45	Sample No:	N/A
Location:	Laboratory Buildings, Ground Floor - Terrapin Building - All Rooms 045		



Material Description:	No Suspect Materials Found	
Identification:	N/A	
Approx. quantity:	N/A	
Accessibility	N/A	<i>Assessment Score</i>
Product type:	N/A	N/A
Extent of Damage:	N/A	N/A
Surface Treatment:	N/A	N/A
Asbestos type:	N/A	N/A
Material Assessment Score:		N/A
Risk Assessment Score:		N/A
Action:	N/A	
Comments:	Modern ceiling tiles with timber above. Plasterboard walls, timber floors and timber and rockwool to outer walls.	

Item No:	46	Sample No:	N/A
Location:	Laboratory Buildings, Ground Floor - Terrapin Building - Switchroom 046		



Material Description:	Putty Flashguards - PVC / Reinforced Plastics	
Identification:	As per sample DK/16 - No Asbestos Found	
Approx. quantity:	N/A	
Accessibility	N/A	Assessment Score
Product type:	N/A	N/A
Extent of Damage:	N/A	N/A
Surface Treatment:	N/A	N/A
Asbestos type:	N/A	N/A
Material Assessment Score:		N/A
Risk Assessment Score:		N/A
Action:	N/A	
Comments:	Within electrical boxes	

Item No: 47

Sample No: N/A

Location: Laboratory Buildings, Ground Floor - Stores
Building- Store 047



Material Description:	No Suspect Materials Found	
Identification:	N/A	
Approx. quantity:	N/A	
Accessibility	N/A	<i>Assessment Score</i>
Product type:	N/A	N/A
Extent of Damage:	N/A	N/A
Surface Treatment:	N/A	N/A
Asbestos type:	N/A	N/A
Material Assessment Score:		N/A
Risk Assessment Score:		N/A
Action:	N/A	
Comments:	Plasterboard ceiling with timber above	

Item No: 48

Sample No: DK/17

Location: Laboratory Buildings, Ground Floor - Stores
Building- Stores x 3 048



Material Description:	Fiberboard Ceiling Panels - Paper Product	
Identification:	Sampled - No Asbestos Found	
Approx. quantity:	N/A	
Accessibility	N/A	Assessment Score
Product type:	N/A	N/A
Extent of Damage:	N/A	N/A
Surface Treatment:	N/A	N/A
Asbestos type:	N/A	N/A
Material Assessment Score:		N/A
Risk Assessment Score:		N/A
Action:	N/A	
Comments:	Solid and plasterboard walls. Non asbestos coating to floor	

Item No: 49

Sample No: DK/18

Location: Laboratory Buildings, External - Stores Building 049



Material Description:	Soffit - Cement Product	
Identification:	Sampled - No Asbestos Found	
Approx. quantity:	N/A	
Accessibility	N/A	<i>Assessment Score</i>
Product type:	N/A	N/A
Extent of Damage:	N/A	N/A
Surface Treatment:	N/A	N/A
Asbestos type:	N/A	N/A
Material Assessment Score:		N/A
Risk Assessment Score:		N/A
Action:	N/A	
Comments:	N/A	

Item No:	50	Sample No:	N/A
Location:	Laboratory Buildings, Ground Floor - Stores Building- Stores x 3 and Lobby 050		



Material Description:	Fiberboard Ceiling Panels - Paper Product	
Identification:	As per sample DK/17 - No Asbestos Found	
Approx. quantity:	N/A	
Accessibility	N/A	<i>Assessment Score</i>
Product type:	N/A	N/A
Extent of Damage:	N/A	N/A
Surface Treatment:	N/A	N/A
Asbestos type:	N/A	N/A
Material Assessment Score:		N/A
Risk Assessment Score:		N/A
Action:	N/A	
Comments:	N/A	

Item No:	52	Sample No:	DK/20
Location:	Laboratory Buildings, Ground Floor - Office Hut - Boiler Room 052		

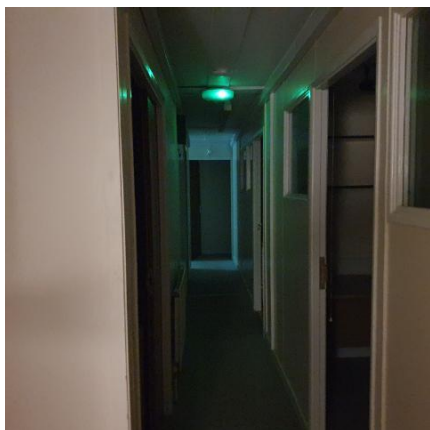


Material Description:	Panel behind Boiler - Insulating Board	
Identification:	Sampled - No Asbestos Found	
Approx. quantity:	N/A	
Accessibility	N/A	<i>Assessment Score</i>
Product type:	N/A	N/A
Extent of Damage:	N/A	N/A
Surface Treatment:	N/A	N/A
Asbestos type:	N/A	N/A
Material Assessment Score:		N/A
Risk Assessment Score:		N/A
Action:	N/A	
Comments:	N/A	

Item No: 53

Sample No: N/A

Location: Laboratory Buildings, Ground Floor - Office Hut - All Rooms 053



Material Description:	No Suspect Materials Found	
Identification:	N/A	
Approx. quantity:	N/A	
Accessibility	N/A	<i>Assessment Score</i>
Product type:	N/A	N/A
Extent of Damage:	N/A	N/A
Surface Treatment:	N/A	N/A
Asbestos type:	N/A	N/A
Material Assessment Score:		N/A
Risk Assessment Score:		N/A
Action:	N/A	
Comments:	Plasterboard walls and ceilings. Rockwool in roof void and within external walls.	



Section 6: Survey Objectives

Instructions were received from Hugo Haig of Lochailort Investments Ltd to carry out a Refurbishment and Demolition asbestos survey at Laboratory Buildings, Lanwades Park, Newmarket, CB8 7UA in accordance with HSG264 and Armour Analytical's quality procedures.

The survey was carried out on 21 November 2022 by David Kelly with the objective of facilitating Refurbishment or Demolition works.

This Refurbishment & Demolition survey is characterised as a 'Full Access Sampling and Identification Survey' in HSG264. This type of survey is used to locate and describe, so far as are reasonably practicable, all asbestos containing materials (ACMs) in the building and will by its nature involve the partial destruction of the building's fabric as access is gained to all areas. A full sampling programme is undertaken to identify possible ACMs and estimate the extent of ACMs reported. A Refurbishment survey should be undertaken in an unoccupied building.

The objective of this survey report is to identify, so far as is reasonably practicable, the location, extent, product type and composition of ACMS within the fabric of the building, prior to said buildings major refurbishment or demolition.

Document Name	Author	Issued by	Revision Number	Issue Date	Page No
2022	David Kelly	Armour AS	0	07/12/2022	59



Section 7: Survey Techniques

Each floor, room and area within the scope was systematically inspected for suspect materials thought or known to contain asbestos and where such materials were encountered their location, extent, and composition were recorded.

Where materials of a similar nature exist, to those previously sampled, and a reasoned argument can be made that their composition is likely to be identical further physical sampling was not undertaken.

Photographs were taken of all sample locations, unless otherwise stated.

The analysis of suspect ACMs was undertaken by a UKAS accredited laboratory using the analytical method detailed in *HSG248, Appendix 2 -Asbestos: The analysts' guide for sampling, analysis and clearance procedures*.

Document Name	Author	Issued by	Revision Number	Issue Date	Page No
2022	David Kelly	Armour AS	0	07/12/2022	60



Section 8: Survey Caveat

This report is based upon a destructive inspection of an unfamiliar site. During the course of the survey all reasonable efforts were made to identify the physical presence of materials containing asbestos within the areas of the building which are subject to future refurbishment or demolition works.

This report will be restricted to the areas that fall within the scope of works for project and will not take into account any area's that do not fall within the scope. Any asbestos that is identified within this report will need to be added to the buildings existing information and should not form the basis for a management survey. This survey will not include priority assessments nor will it include a register.

This survey considered the construction of the building, associated fixtures & fittings and associated structures and in no way should it be considered as a ground investigation report.

Services should be disconnected prior to commencement of a Refurbishment survey; however where plant and/or electrical installations are live or appear to be live then these will not be accessed.

Inspection under floor slab is not included unless core hole sampling has been specifically requested.

This survey report is not a bill of quantities.

Document Name	Author	Issued by	Revision Number	Issue Date	Page No
2022	David Kelly	Armour AS	0	07/12/2022	61



Section 9: Survey Notes

This report has been written with reference to the various Guidance Notes etc, issued, and current at the date of this report and describes circumstances at the site on the date the investigation took place.

Where similar items exist in the building, only one or two samples have been taken to ascertain the material content. It was assumed that similar products were of the same material.

Any person undertaking work within the buildings should be told of the presence of asbestos. This briefing also applies to any other person associated with the site, including staff, sub-contractors and others.

The drawings in the report are not to scale and are illustrative only to indicate approximate locations. The descriptions used are for location identification purposes.

All the recommendations described in this report are based upon assumptions made after consideration of the type of material, condition of the material, its location, analysis result and type of use the area is thought to be subjected to. However, statutory authorities or others could require amendments based on local knowledge, change in legislation, change in use or indeed other conditions or criteria.

Samples taken from floor tiles (or similar material) may include a bitumen adhesive as part of the sample. It is known that some proprietary brands of bitumen have an asbestos content and this will be included as an integral part of the bulk sample unless otherwise stated.

Due to the artex being non-homogenous, it is recommended to treat all areas as containing asbestos if you have a positive sample of artex.

Document Name	Author	Issued by	Revision Number	Issue Date	Page No
2022	David Kelly	Armour AS	0	07/12/2022	62

Section 10: Material Assessment Algorithm

Variable	Score	Examples
Product type	1	Vinyl, 'Bakelite', Cement, Textured Coating, Non-Friable Debris, Floor Tiles, Bitumen, Reinforced Plastics, Mastic (putty), Windowsills
	2	Asbestos Insulating Board, Paper, Rope, Burned Cement Debris, Flashguards, Gaskets
	3	Pipe Insulation, Spray Coating, Friable Debris, Loose Fill Asbestos
Condition / Damage	0	Good
	1	Slight / Minor Damage
	2	Moderate Damage – Breakage to Surface Treatment
	3	Major Damage – Smashed or Exposed Material
Surface Treatment	0	Non-Friable E.G. Vinyl
	1	Enclosed Insulation, Encapsulated AIB, Unsealed Cement, Woven Material, Paper
	2	Unsealed AIB, Encapsulated Insulation, Encapsulated Pipe Lagging
	3	Unsealed Insulation, Spray Coating, Unsealed Pipe Lagging
Asbestos Type	1	Chrysotile
	2	Amosite & Other Amphiboles
	3	Crocidolite

The scores from each of the four sections are added together to produce a risk score:

Risk score	Risk assessment
10 or more	High risk
7 – 9	Medium risk
5 – 6	Low risk
4 & below	Negligible risk

Section 11: Certificates of Bulk Analysis



Our Ref: J250157 FI: 20
Your Ref: 6724
Date: 05/12/2022

ENVIROCHEM
Analytical Laboratories Ltd.
12 The Gardens
Broadcut, Fareham
Hampshire
PO16 8SS



1227
Tel: (01329) 287777
Fax: (01329) 287755
www.envirochem.co.uk
office@envirochem.co.uk

Asbestos Fibre Identification Report

Client: Armour Analytical Services Ltd
Admirals Yard, Station Road, Patchway, Bristol, BS34 6LR
Site Address: Laboratory Buildings, Lanwades Park, Newmarket, CB8 7UA
Sampled By: Armour Analytical Services Ltd
Date sampled/received: 2nd December 2022
Date analysed: 5th December 2022
Analyst/s: Ewelina Kowalczyk Partyar
Analysis Location: 12 The Gardens, Broadcut, Fareham, Hampshire, PO16 8SS

ANALYTICAL PROCEDURE

Fibre identification was carried out in accordance with the documented 'in-house' method (2.01) based on the HSE Guidance Note HSG 248. These employed stereo microscopy, polarized microscopy and dispersion staining techniques.

RESULTS

Sample No.	Sample Ref.	Location	Asbestos Detected	Asbestos Type
DK/01	BS821554	First Floor. Room 58. Sink pad.	No	
DK/02	BS821555	First Floor. Stairwell. Floor tiles.	Yes	Chrysotile
DK/03	BS821556	First Floor. Landing & Corridor. Floor tiles & adhesive.	Yes	Chrysotile
DK/04	BS821557	First Floor. Room 62. Sink pad.	No	

NOTES:

1. Sample(s) were examined for the presence of 6 types of asbestos fibres: crocidolite (blue), amosite (brown), chrysotile (white), anthophyllite, actinolite and tremolite.
2. The results shown in this test report specifically refer to the sample(s) tested as received unless otherwise stated and samples collected by the client are evaluated using information provided by the client. For samples collected by the client the date of receipt is deemed to be the same as the date sampled.
3. Envirochem is a UKAS accredited laboratory for sampling and identification of asbestos containing materials.
4. Comments, observations and opinions are outside the scope of UKAS accreditation.
5. The analytical method in the HSG248 does not quantify the amount of asbestos present, therefore UKAS accreditation does not permit quantification.
6. If, during fibre identification, only 1 or 2 fibres are seen and identified as asbestos, then the term 'trace asbestos identified' is used.
7. This report shall not be reproduced except in full, without written approval of Envirochem.
8. Samples are retained for 6 months, report kept for 5 years from the date of authorisation of this report.

SIGNATURE:



Authorised signatory PRINT NAME: Chloe Bowman

DATE AUTHORISED:
05/12/2022

Reg. No. 2378228 England. Registered Office: Envirochem, 12 The Gardens, Broadcut, Fareham, Hampshire, PO16 8SS.

Page 1 of 5

Document Name	Author	Issued by	Revision Number	Issue Date	Page No
2022	David Kelly	Armour AS	0	07/12/2022	64



Our Ref: J250157 FI: 20
Your Ref: 6724
Date: 05/12/2022

ENVIROCHEM
Analytical Laboratories Ltd.
12 The Gardens
Broadcut, Fareham
Hampshire
PO16 8SS



1227
Tel: (01329) 287777
Fax: (01329) 287755
www.envirochem.co.uk
office@envirochem.co.uk

Asbestos Fibre Identification Report

Client: Armour Analytical Services Ltd
Admirals Yard, Station Road, Patchway, Bristol, BS34 6LR
Site Address: Laboratory Buildings, Lanwades Park, Newmarket, CB8 7UA
Sampled By: Armour Analytical Services Ltd
Date sampled/received: 2nd December 2022
Date analysed: 5th December 2022
Analyst/s: Ewelina Kowalczyk Partiar
Analysis Location: 12 The Gardens, Broadcut, Fareham, Hampshire, PO16 8SS

ANALYTICAL PROCEDURE

Fibre identification was carried out in accordance with the documented 'in-house' method (2.01) based on the HSE Guidance Note HSG 248. These employed stereo microscopy, polarized microscopy and dispersion staining techniques.

RESULTS

Sample No.	Sample Ref.	Location	Asbestos Detected	Asbestos Type
DK/05	BS821558	First Floor. Room 68. Foam insulation.	No	
DK/06	BS821559	First Floor. Room 71. Gate to ductwork.	Yes	Chrysotile
DK/07	BS821560	2nd Floor. Boiler room. Putty to ductwork.	No	
DK/08	BS821561	2nd Floor. Boiler room. Coating to floor.	No	

NOTES:

1. Sample(s) were examined for the presence of 6 types of asbestos fibres: crocidolite (blue), amosite (brown), chrysotile (white), anthophyllite, actinolite and tremolite.
2. The results shown in this test report specifically refer to the sample(s) tested as received unless otherwise stated and samples collected by the client are evaluated using information provided by the client. For samples collected by the client the date of receipt is deemed to be the same as the date sampled.
3. Envirochem is a UKAS accredited laboratory for sampling and identification of asbestos containing materials.
4. Comments, observations and opinions are outside the scope of UKAS accreditation.
5. The analytical method in the HSG248 does not quantify the amount of asbestos present, therefore UKAS accreditation does not permit quantification.
6. If, during fibre identification, only 1 or 2 fibres are seen and identified as asbestos, then the term 'trace asbestos identified' is used.
7. This report shall not be reproduced except in full, without written approval of Envirochem.
8. Samples are retained for 6 months, report kept for 5 years from the date of authorisation of this report.

SIGNATURE:



Authorised signatory PRINT NAME: Chloe Bowman

DATE AUTHORISED:
05/12/2022

Reg. No. 2378228 England. Registered Office: Envirochem, 12 The Gardens, Broadcut, Fareham, Hampshire, PO16 8SS.

Page 2 of 5

Document Name	Author	Issued by	Revision Number	Issue Date	Page No
2022	David Kelly	Armour AS	0	07/12/2022	65



Our Ref: J250157 FI: 20
Your Ref: 6724
Date: 05/12/2022

ENVIROCHEM
Analytical Laboratories Ltd.
12 The Gardens
Broadcut, Fareham
Hampshire
PO16 8SS



1227
Tel: (01329) 287777
Fax: (01329) 287755
www.envirochem.co.uk
office@envirochem.co.uk

Asbestos Fibre Identification Report

Client: Armour Analytical Services Ltd
Admirals Yard, Station Road, Patchway, Bristol, BS34 6LR
Site Address: Laboratory Buildings, Lanwades Park, Newmarket, CB8 7UA
Sampled By: Armour Analytical Services Ltd
Date sampled/received: 2nd December 2022
Date analysed: 5th December 2022
Analyst/s: Ewelina Kowalczyk Partiar
Analysis Location: 12 The Gardens, Broadcut, Fareham, Hampshire, PO16 8SS

ANALYTICAL PROCEDURE

Fibre identification was carried out in accordance with the documented 'in-house' method (2.01) based on the HSE Guidance Note HSG 248. These employed stereo microscopy, polarized microscopy and dispersion staining techniques.

RESULTS

Sample No.	Sample Ref.	Location	Asbestos Detected	Asbestos Type
DK/09	BS821562	Ground floor. WC'S X2 . Floor tiles.	Yes	Chrysotile
DK/10	BS821563	Ground floor. Room 40. Inner lining panels to cabinet . (Dura steel)	No	
DK/11	BS821564	Ground floor. Corridor. Door surrounds.	No	
DK/12	BS821565	Ground floor. Corridor & room 41. Floor tiles.	Yes	Chrysotile

NOTES:

1. Sample(s) were examined for the presence of 6 types of asbestos fibres: crocidolite (blue), amosite (brown), chrysotile (white), anthophyllite, actinolite and tremolite.
2. The results shown in this test report specifically refer to the sample(s) tested as received unless otherwise stated and samples collected by the client are evaluated using information provided by the client. For samples collected by the client the date of receipt is deemed to be the same as the date sampled.
3. Envirochem is a UKAS accredited laboratory for sampling and identification of asbestos containing materials.
4. Comments, observations and opinions are outside the scope of UKAS accreditation.
5. The analytical method in the HSG248 does not quantify the amount of asbestos present, therefore UKAS accreditation does not permit quantification.
6. If, during fibre identification, only 1 or 2 fibres are seen and identified as asbestos, then the term 'trace asbestos identified' is used.
7. This report shall not be reproduced except in full, without written approval of Envirochem.
8. Samples are retained for 6 months, report kept for 5 years from the date of authorisation of this report.

SIGNATURE:



Authorised signatory PRINT NAME: Chloe Bowman

DATE AUTHORISED:
05/12/2022

Reg. No. 2378228 England. Registered Office: Envirochem, 12 The Gardens, Broadcut, Fareham, Hampshire, PO16 8SS.

Page 3 of 5

Document Name	Author	Issued by	Revision Number	Issue Date	Page No
2022	David Kelly	Armour AS	0	07/12/2022	66



Our Ref: J250157 FI: 20
Your Ref: 6724
Date: 05/12/2022

ENVIROCHEM
Analytical Laboratories Ltd.
12 The Gardens
Broadcut, Fareham
Hampshire
PO16 8SS



1227
Tel: (01329) 287777
Fax: (01329) 287755
www.envirochem.co.uk
office@envirochem.co.uk

Asbestos Fibre Identification Report

Client: Armour Analytical Services Ltd
Admirals Yard, Station Road, Patchway, Bristol, BS34 6LR
Site Address: Laboratory Buildings, Lanwades Park, Newmarket, CB8 7UA
Sampled By: Armour Analytical Services Ltd
Date sampled/received: 2nd December 2022
Date analysed: 5th December 2022
Analyst/s: Ewelina Kowalczyk Partyar
Analysis Location: 12 The Gardens, Broadcut, Fareham, Hampshire, PO16 8SS

ANALYTICAL PROCEDURE

Fibre identification was carried out in accordance with the documented 'in-house' method (2.01) based on the HSE Guidance Note HSG 248. These employed stereo microscopy, polarized microscopy and dispersion staining techniques.

RESULTS

Sample No.	Sample Ref.	Location	Asbestos Detected	Asbestos Type
DK/13	BS821566	Block A. Room 10. Floor tiles.	Yes	Chrysotile
DK/14	BS821567	Block A. Room 24. Rope seal to equipment.	Yes	Chrysotile
DK/15	BS821568	Water Shack. Wall panels.	No	
DK/16	BS821569	Kirkham Building. Putty flash guards.	No	

NOTES:

1. Sample(s) were examined for the presence of 6 types of asbestos fibres: crocidolite (blue), amosite (brown), chrysotile (white), anthophyllite, actinolite and tremolite.
2. The results shown in this test report specifically refer to the sample(s) tested as received unless otherwise stated and samples collected by the client are evaluated using information provided by the client. For samples collected by the client the date of receipt is deemed to be the same as the date sampled.
3. Envirochem is a UKAS accredited laboratory for sampling and identification of asbestos containing materials.
4. Comments, observations and opinions are outside the scope of UKAS accreditation.
5. The analytical method in the HSG248 does not quantify the amount of asbestos present, therefore UKAS accreditation does not permit quantification.
6. If, during fibre identification, only 1 or 2 fibres are seen and identified as asbestos, then the term 'trace asbestos identified' is used.
7. This report shall not be reproduced except in full, without written approval of Envirochem.
8. Samples are retained for 6 months, report kept for 5 years from the date of authorisation of this report.

SIGNATURE:



Authorised signatory PRINT NAME: Chloe Bowman

DATE AUTHORISED:
05/12/2022

Reg. No. 2378228 England. Registered Office: Envirochem, 12 The Gardens, Broadcut, Fareham, Hampshire, PO16 8SS.

Page 4 of 5

Document Name	Author	Issued by	Revision Number	Issue Date	Page No
2022	David Kelly	Armour AS	0	07/12/2022	67



Our Ref: J250157 FI: 20
Your Ref: 6724
Date: 05/12/2022

ENVIROCHEM
Analytical Laboratories Ltd.
12 The Gardens
Broadcut, Fareham
Hampshire
PO16 8SS



1227
Tel: (01329) 287777
Fax: (01329) 287755
www.envirochem.co.uk
office@envirochem.co.uk

Asbestos Fibre Identification Report

Client: Armour Analytical Services Ltd
Admirals Yard, Station Road, Patchway, Bristol, BS34 6LR
Site Address: Laboratory Buildings, Lanwades Park, Newmarket, CB8 7UA
Sampled By: Armour Analytical Services Ltd
Date sampled/received: 2nd December 2022
Date analysed: 5th December 2022
Analyst/s: Ewelina Kowalczyk Partiar
Analysis Location: 12 The Gardens, Broadcut, Fareham, Hampshire, PO16 8SS

ANALYTICAL PROCEDURE

Fibre identification was carried out in accordance with the documented 'in-house' method (2.01) based on the HSE Guidance Note HSG 248. These employed stereo microscopy, polarized microscopy and dispersion staining techniques.

RESULTS

Sample No.	Sample Ref.	Location	Asbestos Detected	Asbestos Type
DK/17	BS821570	Store Building. Storex3. Fireboard ceiling.	No	
DK/18	BS821571	Store Building. External. Soffits.	No	
DK/19	BS821572	Store Building. Lab. Sink pad.	Yes	Chrysotile
DK/20	BS821573	Office HUT. Boiler room. Panel behind boiler.	No	

NOTES:

1. Sample(s) were examined for the presence of 6 types of asbestos fibres: crocidolite (blue), amosite (brown), chrysotile (white), anthophyllite, actinolite and tremolite.
2. The results shown in this test report specifically refer to the sample(s) tested as received unless otherwise stated and samples collected by the client are evaluated using information provided by the client. For samples collected by the client the date of receipt is deemed to be the same as the date sampled.
3. Envirochem is a UKAS accredited laboratory for sampling and identification of asbestos containing materials.
4. Comments, observations and opinions are outside the scope of UKAS accreditation.
5. The analytical method in the HSG248 does not quantify the amount of asbestos present, therefore UKAS accreditation does not permit quantification.
6. If, during fibre identification, only 1 or 2 fibres are seen and identified as asbestos, then the term 'trace asbestos identified' is used.
7. This report shall not be reproduced except in full, without written approval of Envirochem.
8. Samples are retained for 6 months, report kept for 5 years from the date of authorisation of this report.

SIGNATURE:



Authorised signatory PRINT NAME: Chloe Bowman

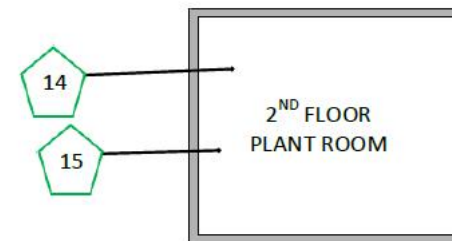
DATE AUTHORISED:
05/12/2022







Reg. No. 2378228 England. Registered Office: Envirochem, 12 The Gardens, Broadcut, Fareham, Hampshire, PO16 8SS.

Page 5 of 5

Document Name	Author	Issued by	Revision Number	Issue Date	Page No
2022	David Kelly	Armour AS	0	07/12/2022	68

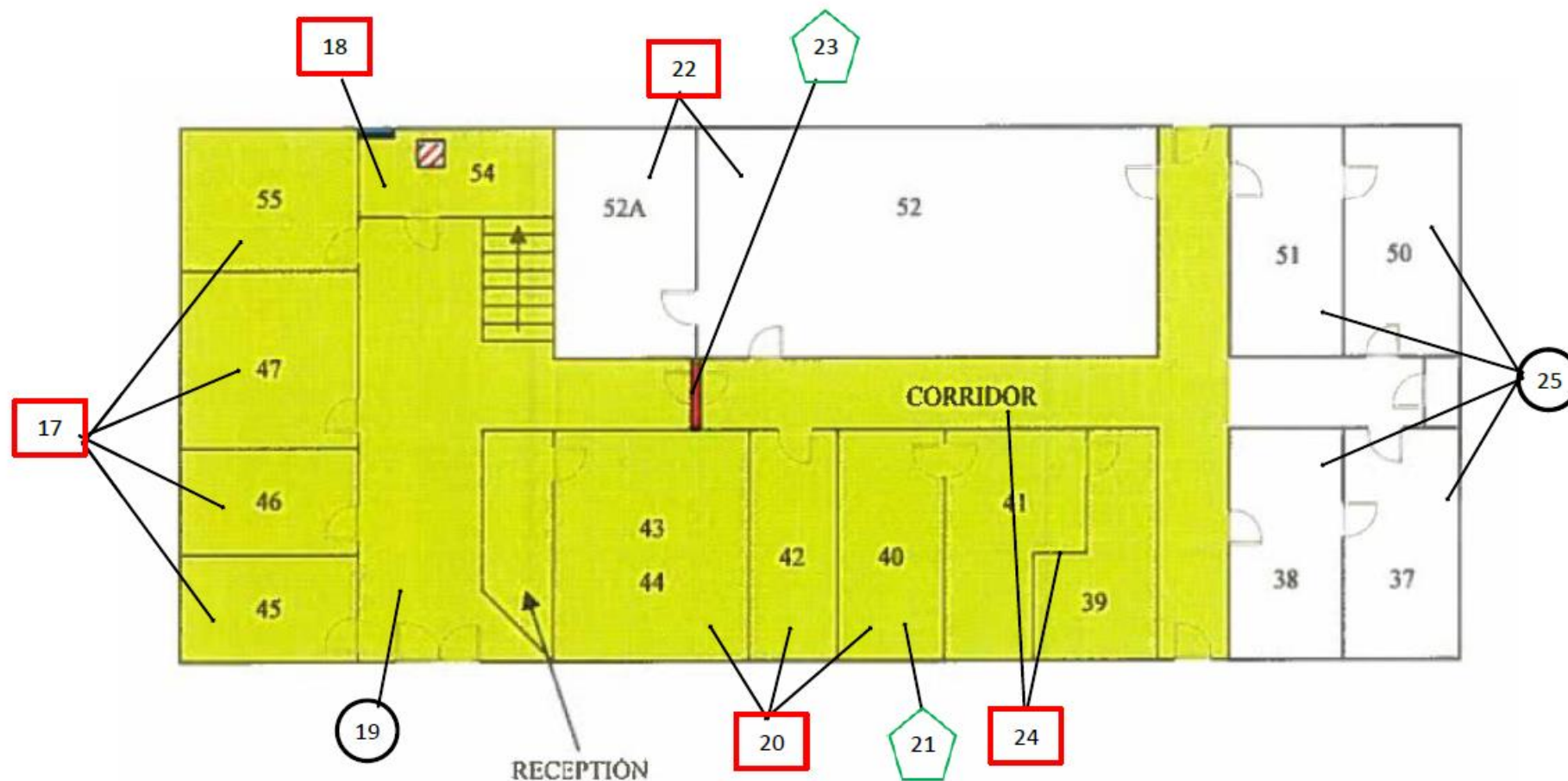
A detailed floor plan of the first floor of the University of Toronto Library. The plan shows various rooms and corridors, with numbered callouts 1 through 16. Callout 1 points to a green pentagon in the bottom left. Callout 2 points to a circle in the top left. Callout 3 points to a red square in the top left. Callout 4 points to a red square in the middle left. Callout 5 points to a circle in the top center. Callout 6 points to a circle in the bottom center. Callout 7 points to a green pentagon in the bottom center. Callout 8 points to a circle in the bottom center. Callout 9 points to a circle in the top center. Callout 10 points to a circle in the bottom center. Callout 11 points to a green pentagon in the top right. Callout 12 points to a red square in the middle right. Callout 13 points to a circle in the top right. Callout 14 points to a circle in the middle right. Callout 15 points to a circle in the middle right. Callout 16 points to a circle in the bottom right. A yellow shaded area is located in the top left, and a green shaded area is located in the bottom left.




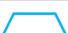




Key	
	Visual Inspection
	Asbestos Detected (Positive Item)
	No Asbestos Detected (Negative Item)
	Presumed to Contain Asbestos
	Strongly Presumed to Contain Asbestos
	No Access

Document Name	Author	Issued by	Revision Number	Issue Date	Page No
2022	David Kelly	Armour AS	0	07/12/2022	69

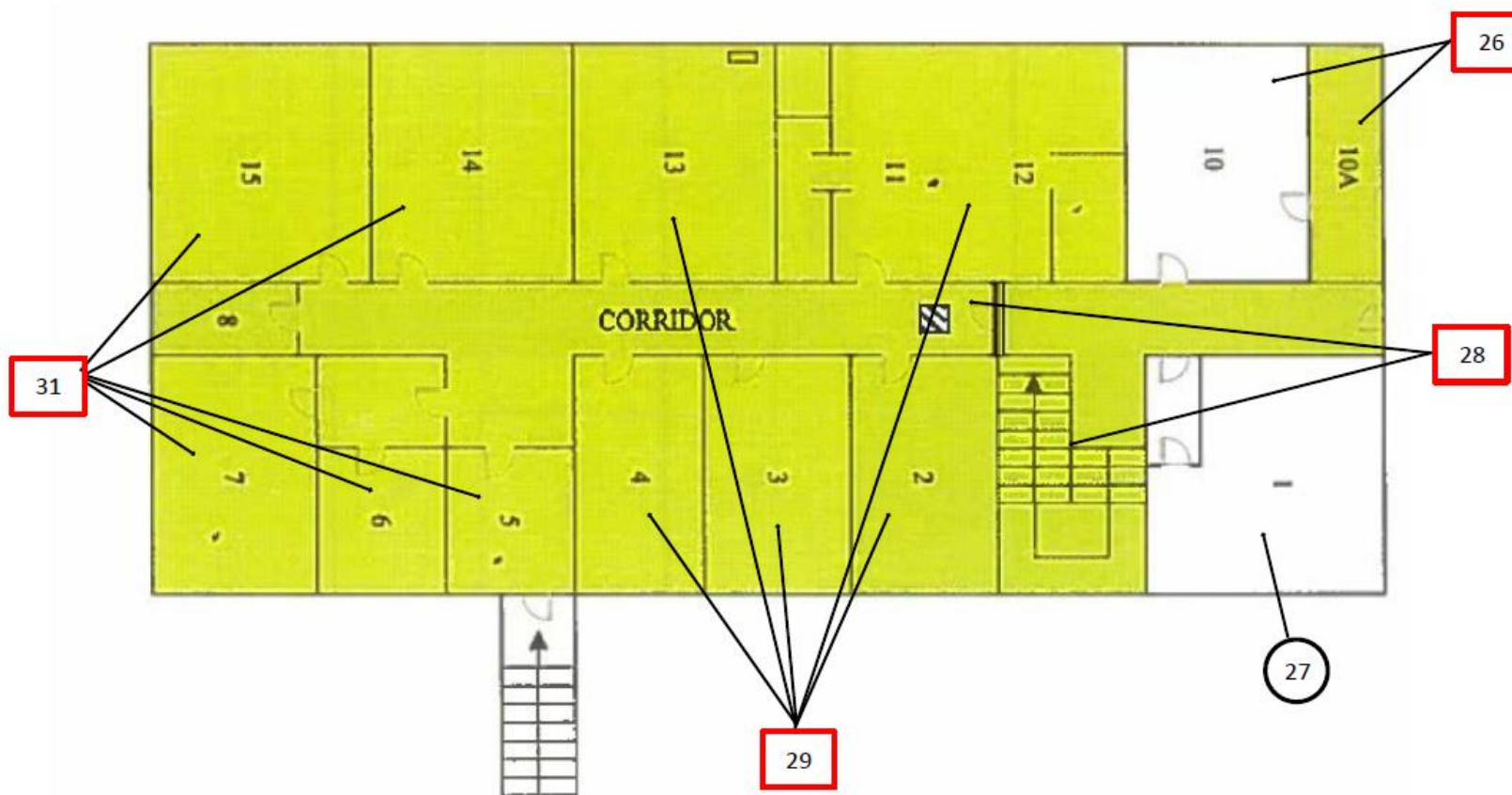
BLOCK B – GROUND FLOOR









Key	
	Visual Inspect
	Asbestos Detected (Positive Item)
	No Asbestos Detected (Negative Item)
	Presumed to Contain Asbestos
	Strongly Presumed to Contain Asbestos
	No Access

Document Name	Author	Issued by	Revision Number	Issue Date	Page No
2022	David Kelly	Armour AS	0	07/12/2022	70

BLOCK A – FIRST FLOOR

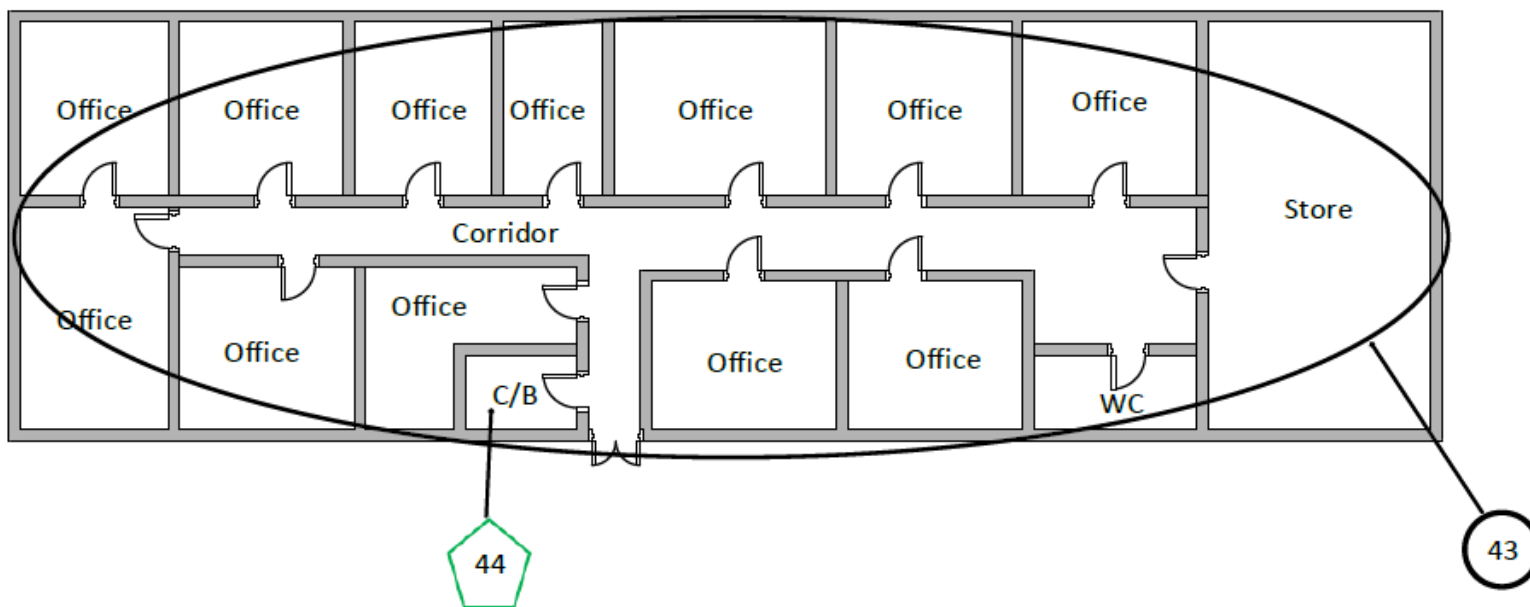








Key	
	Visual Inspection
	Asbestos Detected (Positive Item)
	No Asbestos Detected (Negative Item)
	Presumed to Contain Asbestos
	Strongly Presumed to Contain Asbestos
	No Access

Document Name	Author	Issued by	Revision Number	Issue Date	Page No
2022	David Kelly	Armour AS	0	07/12/2022	71

BLOCK A – GROUND FLOOR

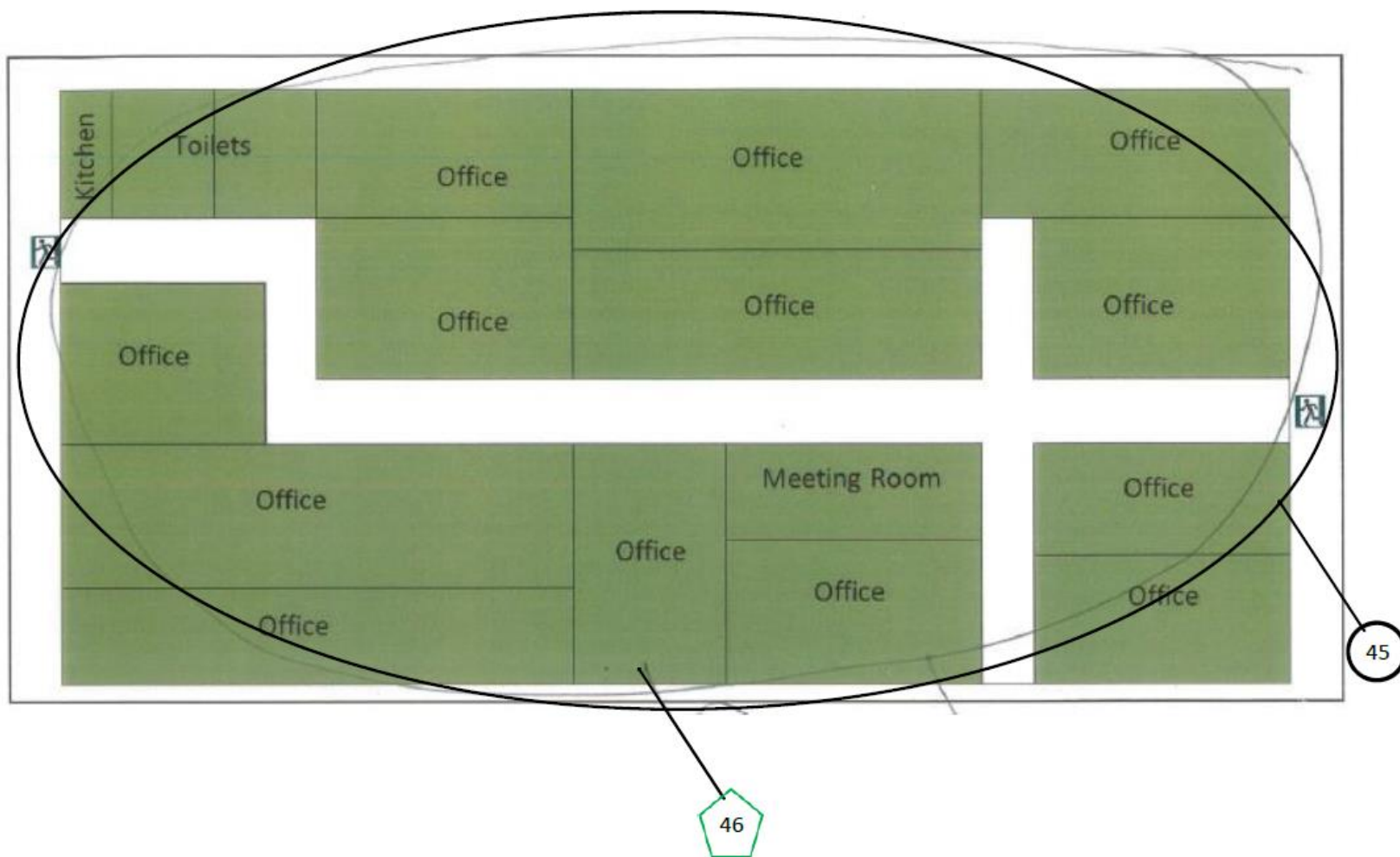
KIRKHAM BUILDING









Key	
	Visual Inspection
	Asbestos Detected (Positive Item)
	No Asbestos Detected (Negative Item)
	Presumed to Contain Asbestos
	Strongly Presumed to Contain Asbestos
	No Access

Document Name	Author	Issued by	Revision Number	Issue Date	Page No
2022	David Kelly	Armour AS	0	07/12/2022	73

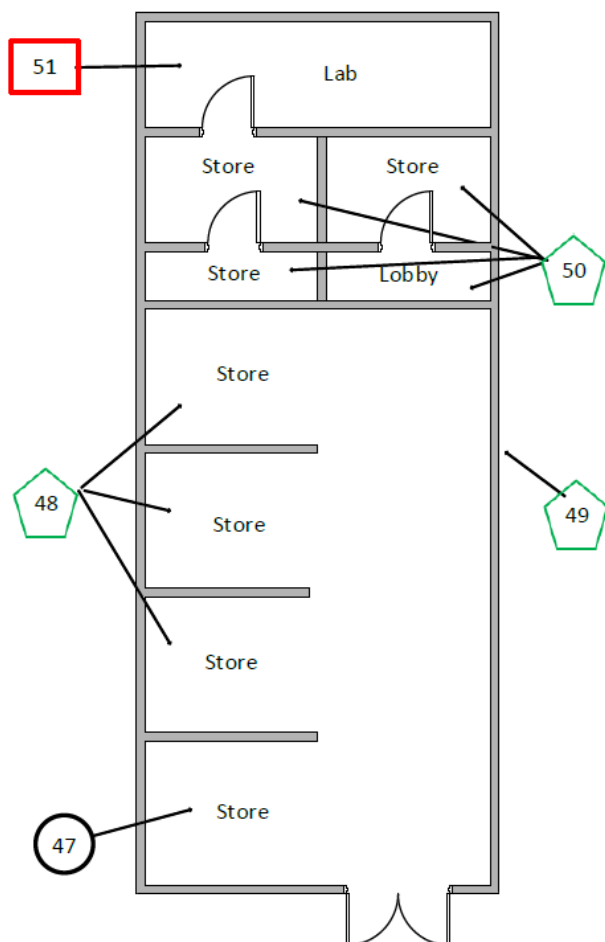
TERRAPIN BUILDING



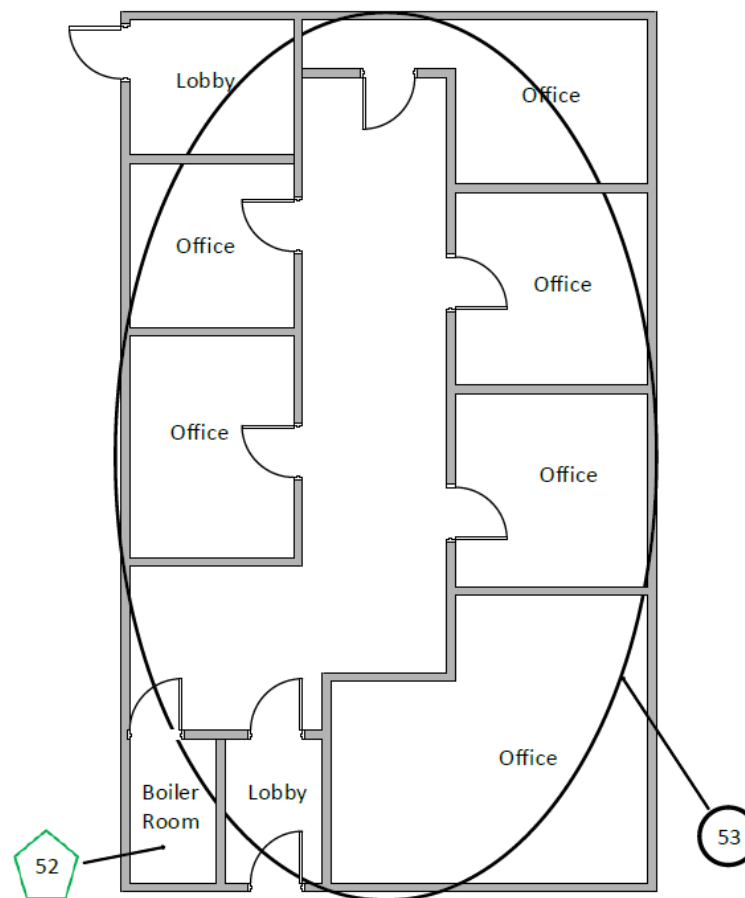
Key	
	Visual Inspection
	Asbestos Detected (Positive Item)
	No Asbestos Detected (Negative Item)
	Presumed to Contain Asbestos
	Strongly Presumed to Contain Asbestos
	No Access







Document Name	Author	Issued by	Revision Number	Issue Date	Page No
2022	David Kelly	Armour AS	0	07/12/2022	74

STORES BUILDING



OFFICE HUT



Key	
	Visual Inspection
	Asbestos Detected (Positive Item)
	No Asbestos Detected (Negative Item)
	Presumed to Contain Asbestos
	Strongly Presumed to Contain Asbestos
	No Access

Document Name	Author	Issued by	Revision Number	Issue Date	Page No
2022	David Kelly	Armour AS	0	07/12/2022	75



I the surveyor can confirm that this report is accurate to my findings onsite and this survey has been Content checked by myself.

Checked by: Will Fyles

Date: 07/12/2022

I the Admin Manager can confirm that this report is accurate to the paperwork received and this survey has been quality checked by myself.

Checked by: Andrea Bansee

Date: 07/12/2022

The Consultant will, on written request, grant to the addressees all licenses required to enable them to use and reproduce any material and documents comprised in the investigation results for any lawful purpose, royalty free.

Report Compiled By

**Armour Analytical Services Ltd, Unit 6, Guardian Street Industrial Estate,
Warrington, WA5 1SJ**

Document Name	Author	Issued by	Revision Number	Issue Date	Page No
2022	David Kelly	Armour AS	0	07/12/2022	76